

---

## FW: at-large councilmembers

1 message


---

**Districting** <Districting@hayward-ca.gov>  
To: HaywardDistricting <HaywardDistricts@hayward-ca.gov>

Thu, May 2, 2024 at 4:47 PM

**CAUTION:**This is an external email. Do not click on links or open attachments unless you know the content is safe.

---

**From:** Beth Marshburn <  
**Sent:** Thursday, May 2, 2024 3:47:17 PM (UTC-08:00) Pacific Time (US & Canada)  
**To:** Districting <[Districting@hayward-ca.gov](mailto:Districting@hayward-ca.gov)>  
**Subject:** at-large councilmembers

**CAUTION:**This is an external email. Do not click on links or open attachments unless you know the content is safe.

I haven't read all the new material yet (if there is much?) but all I gather so far is that we will have district-based representation, which is good. But in several places I've lived that successfully used this, they've also had (at least) a single at-large member. I hope that's being considered.

All I see so far is about drawing maps, which is important. But it's only one prerequisite for district-based representation, and I hope we don't spend all our time map-drawing without attention to the process of actually moving to a new election system.

I'm saying I'd like to see this happen; let's don't duck around for the next several years and get nowhere, please.

Thanks,  
Beth Marshburn



---

## FW: Hayward District Formation - New submission from Contact Us

1 message



---

**Districting** <Districting@hayward-ca.gov>  
To: HaywardDistricting <HaywardDistricts@hayward-ca.gov>

Thu, May 2, 2024 at 5:08 PM

**CAUTION:**This is an external email. Do not click on links or open attachments unless you know the content is safe.

---

**From:**   
**Sent:** Thursday, May 2, 2024 4:07:57 PM (UTC-08:00) Pacific Time (US & Canada)  
**To:**   
Districting <[Districting@hayward-ca.gov](mailto:Districting@hayward-ca.gov)>  
**Subject:** Hayward District Formation - New submission from Contact Us

**CAUTION:**This is an external email. Do not click on links or open attachments unless you know the content is safe.

**Name**

Beth Marshburn

**Email**



**Message**

So much angst has already gone into other mapping and line-drawing efforts. I'm thinking at least of the projects where community members voted on spending budgets on projects in their neighborhoods - what were those neighborhoods? Nextdoor has way too many unrecognizable "neighborhoods" but they could be put up as straw lines. I'm just wondering whether you could seed the Draft Maps with a couple of things that are clearly labeled as "\*\*\*\*\*NOT submissions, but for ideas only\*\*\*\*\*" - something like that? Since there are So many maps up there now.

---

## **FW: Questions: Districting law & regulations, district / council members count**

1 message


---

**Districting** <Districting@hayward-ca.gov>  
To: HaywardDistricting <HaywardDistricts@hayward-ca.gov>

Thu, May 2, 2024 at 5:47 PM

CAUTION: This is an external email. Do not click on links or open attachments unless you know the content is safe.

---

From: George Herbert   
Sent: Thursday, May 2, 2024 4:47:03 PM (UTC-08:00) Pacific Time (US & Canada)  
To: Districting  
Cc: George Herbert  
Subject: Questions: Districting law & regulations, district / council members count

CAUTION: This is an external email. Do not click on links or open attachments unless you know the content is safe.

Could you add to the districting website the applicable state and county and city laws and regulations that apply to creating districts?

Also, how many districts or council members are required or desired?

Thank you.

George Herbert

Sent from my iPhone

---

## FW: non-district CVRA remedies: comment on April 16 council meeting item 8

1 message

---

**Districting** <Districting@hayward-ca.gov>  
To: HaywardDistricting <HaywardDistricts@hayward-ca.gov>

Mon, May 6, 2024 at 1:15 AM

CAUTION: This is an external email. Do not click on links or open attachments unless you know the content is safe.

---

From: Dave Robinson   
Sent: Monday, May 6, 2024 12:15:37 AM (UTC-08:00) Pacific Time (US & Canada)  
To: List-Mayor-Council; Districting  
Subject: non-district CVRA remedies: comment on April 16 council meeting item 8

CAUTION: This is an external email. Do not click on links or open attachments unless you know the content is safe.

To: Mayor Salinas, members of the Hayward City Council, and city staff

From: David B. Robinson, resident of Hayward

May 6, 2024

I offer belated comments regarding item 8, LB 24-011, resolution of intention to adopt city council districts, adopted at the April 16, 2024 council meeting.

The council has acted appropriately by beginning a process to diligently consider district elections as a California Voting Rights Act (CVRA) remedy, with community input. Because Hayward is not a highly segregated city, I expect that this remedy will prove unsatisfactory to both the City and the plaintiffs. The plaintiffs' attorney, Mr. Rafferty, claimed on March 10 that "it is possible to create at least one district that is majority Asian", but he has not substantiated this by releasing a proposed map to the public. Mr. Rafferty claimed on March 21 that Hayward has forfeited its "safe harbor" option to adopt districts, in which case there is no reason to favor this remedy, or rush the process.

In 2023, the California Supreme Court clarified that several options other than districts are available to address under-representation of protected groups (*Pico Neighborhood Association v. City of Santa Monica*, case S263972). The court established a more specific test for vote dilution, so the current bar for plaintiffs to prove CVRA violations is not low, as the city's attorney, Mr. Vigilia, claimed in his presentation. I urge the city and plaintiffs to work together to carefully consider all available remedies.

As a CVRA remedy, districts have drawbacks:

- The remedy can only work when a city has strong geographic segregation.
- It offers no benefits to protected group members outside of their designated districts, and could hurt them if they are isolated by district lines. This could invalidate a district remedy, according to *Pico*.
- If a district has two strong candidates that would both be chosen in an at-large election, no more than one can win.

- Voters have fewer choices than in at-large elections.
- Voters in a district who dislike the winner have no path to satisfactory representation.
- Drawing district lines splits groups of voters who wish to act together, sometimes leading to bitter disputes, as occurred recently in San Francisco's supervisorial redistricting.
- Districts do not always improve representation of protected groups.

Proportional ranked-choice voting (PRCV), first used in Alameda County by Albany in 2022 to resolve a CVRA claim, is an option cited by the California Supreme Court that avoids these flaws:

- PRCV retains the at-large representation that Hayward currently enjoys.
- In practice, nearly every voter helps elect a winner.
- Candidates appealing to protected groups can live anywhere in the city.
- All voters enjoy a diverse list of candidates.
- Multiple candidates appealing to protected groups can be elected if popular enough. Mr. Rafferty states that 34% of Hayward voters are Asian-American. If they were to all vote for Asian-American candidates in an at-large PRCV election without staggered terms, they could elect not just one but two council members representing the whole city.
- Protected groups (and women) increased their representation in many cases where this method was adopted in the United States and elsewhere.
- Through a court settlement, PRCV could be implemented in time for the 2024 election.

In light of the Pico decision, the San Francisco school and city college boards are working with Mr. Rafferty to consider PRCV. Burbank and Santa Monica are considering cumulative voting, a semi-proportional method that is a common federal Voting Rights Act remedy. I encourage careful consideration of non-district alternatives in cooperation with the plaintiffs. This will ensure that Hayward invests in an election method with the strongest likelihood of improving representation of protected groups without imposing undue constraints on voters and candidates. Finally, I ask that the city acknowledge that non-district CVRA remedies exist on the [maphayward.org](https://maphayward.org) website.

Sincerely,  
David B. Robinson

---

## FW: Hazel District

1 message

**Districting** <Districting@hayward-ca.gov>

Thu, May 9, 2024 at 6:47 PM

To: HaywardDistricting <HaywardDistricts@hayward-ca.gov>

**CAUTION:**This is an external email. Do not click on links or open attachments unless you know the content is safe.

---

**From:** Melissa 

**Sent:** Thursday, May 9, 2024 5:46:01 PM (UTC-08:00) Pacific Time (US & Canada)

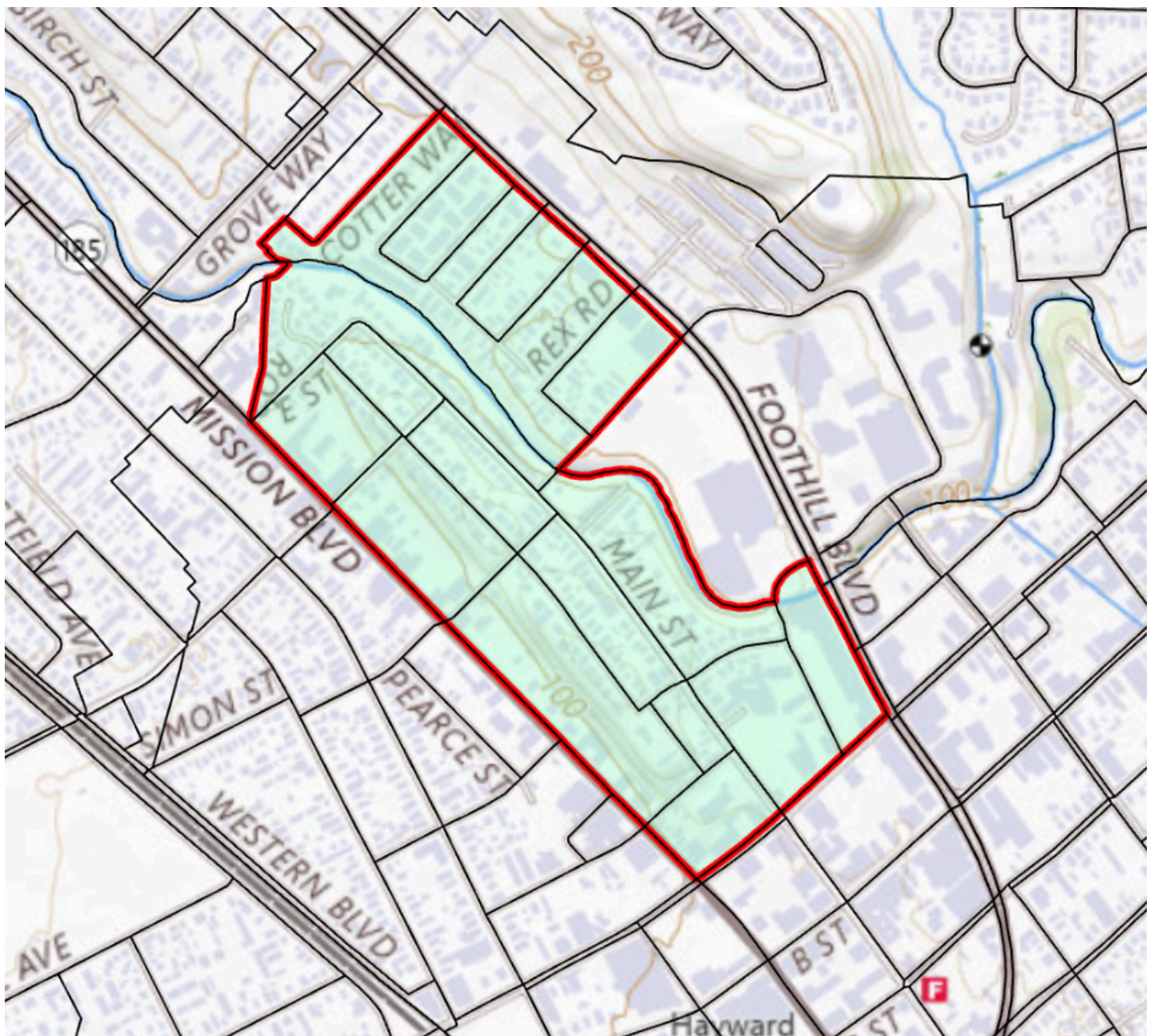
**To:** [districting@husd.us](mailto:districting@husd.us) <[districting@husd.us](mailto:districting@husd.us)>; Districting <[Districting@hayward-ca.gov](mailto:Districting@hayward-ca.gov)>

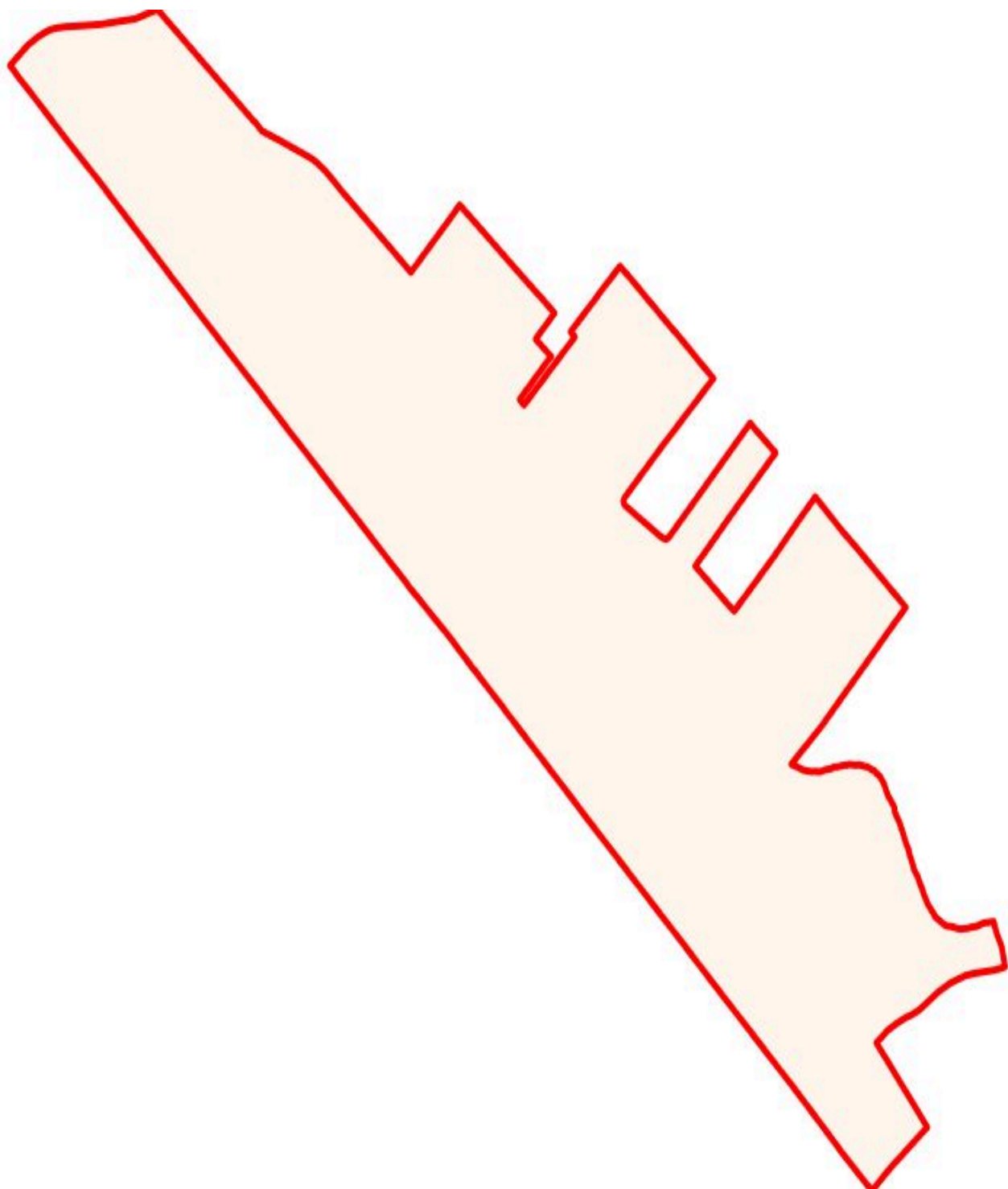
**Subject:** Hazel District

CAUTION:This is an external email. Do not click on links or open attachments unless you know the content is safe.

Please consider Hazel district.









Submission ID: 05092024\_Hazel

Submission ID: Draft - Not Submitted to the California Citizens Redistricting Commission

Describe your community

Give your community a name\*

Hazel

Tell us about your community. What are your shared interests? What brings you together? What is important to your community?\*

Hazel & Main St. are a cornerstone of our neighborhood. Many of us have lived here for decades. Neighbors know each other and work together on the hazel garden project. We typically are grouped with 'Cherryland' but we do not feel a part of cherryland at all. We are separated by Mission St. and the large hills on Simon and Sunset so we do not generally associate. We call our neighborhood Hazel.

Are there nearby areas you want to be in a district with? Nearby areas you don't want to be in a district with? Why or why not?

We do not want to be grouped in with Cherryland or Ashland. We need our own district. We prefer to be grouped with neighborhood along San Lorenzo creek. Do NOT group us with the new mega condos Lincoln Landing which should have never been built.

Is there anything else you can tell us about your community?

We'd love more walking paths along the San Lorenzo creek

---

## FW: potential Council districts

1 message


---

**Districting** <Districting@hayward-ca.gov>  
To: HaywardDistricting <HaywardDistricts@hayward-ca.gov>

Fri, May 10, 2024 at 9:11 AM


**CAUTION:**This is an external email. Do not click on links or open attachments unless you know the content is safe.

---

**From:** Debbie Frederick   
**Sent:** Friday, May 10, 2024 8:11:01 AM (UTC-08:00) Pacific Time (US & Canada)  
**To:** Districting <Districting@hayward-ca.gov>  
**Subject:** potential Council districts

**CAUTION:**This is an external email. Do not click on links or open attachments unless you know the content is safe.

Briefly/quickly here

Please be aware of income & other differences in the neighborhoods BELOW, (ie downhill, or west of campus), CSUEB – Hayward vs those “above”, (ie east of campus). My home is below campus , & my ZIP code  does not represent my community!

Regards, Debbie Frederick



PS- please add me to any City email lists on this districting issue & process

---

## FW: districting

1 message


---

**Districting** <Districting@hayward-ca.gov>  
To: HaywardDistricting <HaywardDistricts@hayward-ca.gov>

Fri, May 10, 2024 at 10:31 PM

**CAUTION:**This is an external email. Do not click on links or open attachments unless you know the content is safe.

---

**From:** Sherman's email   
**Sent:** Friday, May 10, 2024 9:31:06 PM (UTC-08:00) Pacific Time (US & Canada)  
**To:** Districting <Districting@hayward-ca.gov>; List-Mayor-Council <List-Mayor-Council@hayward-ca.gov>  
**Subject:** districting

**CAUTION:**This is an external email. Do not click on links or open attachments unless you know the content is safe.

There is no clear evidence one way or the other.

Districts greatly reduce the cost of campaigning and increase articulation/demands of the needs of each district, but also diminish responsiveness to the needs of the city as a whole, and encourages log-rolling of Council members looking to cut a deal for their district by supporting some deal for other districts for four votes at the cost of those left out.

This seems unlikely in Hayward given our strong propensity to be nice to each other, support vague priorities, and let staff do the specifics. We cooperate for consensus much more than we scheme to cut deals, which quickly gets just too complicated. The collegial reality is just the opposite of how most people think about politics.

em  
City-wide has the advantage of candidates running for the city as a whole, but with more networking and campaign funds required. In a low participation city like Hayward, the networks of city-interested people are fairly small, and it is still possible to go door to door for frequent voters.

One way to balance is to have city-wide districts for one council member and mayor and 5 district reps. A district rep is likely to want to step up to city-wide as a basis for running for mayor in Hayward's line-up-and wait system.

--



---

**FW: Questions and some background tables, maps**

1 message

---

**Districing** <Districing@hayward-ca.gov>

To: HaywardDistricing <HaywardDistricts@hayward-ca.gov>

**CAUTION:** This is an external email. Do not click on links or open attachments unless you know the content is safe.

---

**From:** Charles Purvis 

**Sent:** Monday, May 13, 2024 2:52:44 PM (UTC-08:00) Pacific Time (US & Canada)

**To:** Districing <Districing@hayward-ca.gov>

**Subject:** Questions and some background tables, maps

**CAUTION:** This is an external email. Do not click on links or open attachments unless you know the content is safe.

Hello Hayward!

I've produced some tables and maps that might be of interest in the ongoing process to develop city council districts for Hayward.

I'm looking forward to attending the meeting on May 14th.

Question #1: Has the City Council debated the option of creating five council districts and one "at-large" council member, similar to what's in the City of Oakland?

Questions #2: Has the City Council debated the issue of acceptable error in the population differences between future council districts? I'm assuming the City will use the Census 2020 total of

Attached documents:

1. The artist Jeanne Bertolina (2019) created a graphic showing the different neighborhoods of Hayward. I've got a print of this great graphic! It may serve as a good-hearted theme/image to
2. I've created a map showing 18 neighborhoods of Hayward, based on the City's official neighborhood districts, as adjusted to match the 2020 Census block boundaries. I then produced surr
3. The PDF file "hayward\_demographic\_background\_1.pdf" includes data from the US decennial census, the Census Bureau's American Community Survey, and voter registration statistics fr

Feel free to share this information. If the City would like the background Excel and GIS files, I would be happy to provide.

Chuck Purvis  
Hayward, California

[linkedin.com](#)



# HAYWARD

## NEIGHBORHOODS

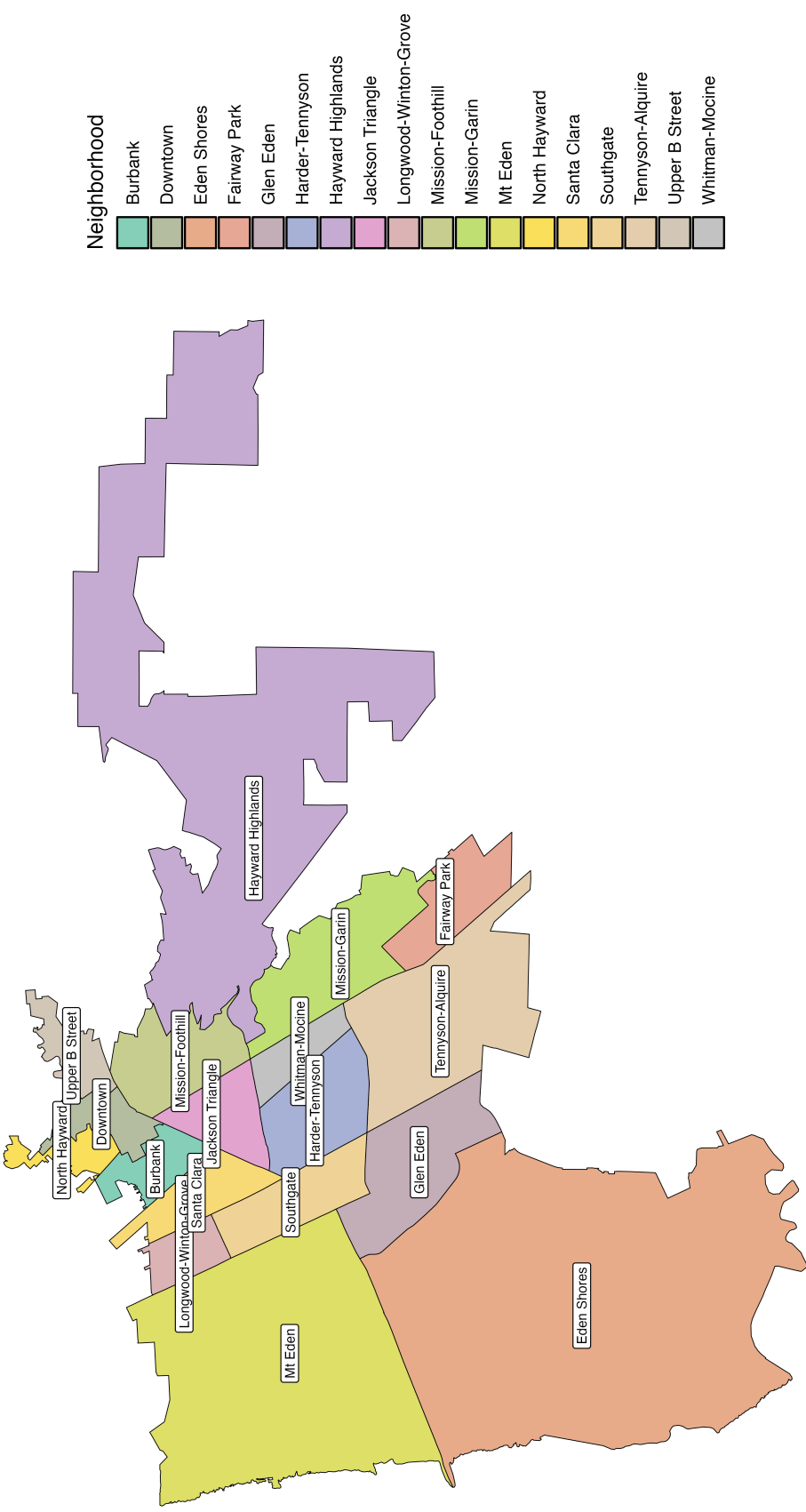
### MAP

HAYWARD  
NEIGHBORHOODS  
MAP

JEANNE BERTOLINA © 2019

JEANNE BERTOLINA © 2019

Hayward Neighborhoods  
Census Bureau PL 94-171 for 2020: Block level





**Table A.1**

**Year 2020 Population by Race/Ethnicity: United States, California, San Francisco Bay Area, Alameda County, Hayward City**  
**Census 2020, PL 94-171 File**

Area	Total Population	Hispanic, Any Race	Non-Hispanic						
			White	Black	AIAN*	Asian	NHOPI*	Other	Multi
United States	331,449,281	62,080,044	191,697,647	39,940,338	2,251,699	19,618,719	622,018	1,689,833	13,548,983
California	39,538,223	15,579,652	13,714,587	2,119,286	156,085	5,978,795	138,167	223,929	1,627,722
San Francisco Bay Area	7,765,640	1,891,985	2,783,589	435,009	18,254	2,150,320	43,214	50,035	393,234
Alameda County, California	1,682,353	393,749	472,277	159,499	4,131	540,511	13,209	10,440	88,537
Hayward city, California	162,954	67,079	21,436	14,003	346	47,655	4,915	913	6,607

\* AIAN = American Indian or Alaskan Native; NHOPI = Native Hawaiian or Other Pacific Islander

**Table A.2**

**Share of Year 2020 Population by Race/Ethnicity: United States, California, San Francisco Bay Area, Alameda County, Hayward City**  
**Census 2020, PL 94-171 File**

Area	Total Population	Hispanic, Any Race	Non-Hispanic						
			White	Black	AIAN*	Asian	NHOPI*	Other	Multi
United States	100.0%	18.7%	57.8%	12.1%	0.7%	5.9%	0.2%	0.5%	4.1%
California	100.0%	39.4%	34.7%	5.4%	0.4%	15.1%	0.3%	0.6%	4.1%
San Francisco Bay Area	100.0%	24.4%	35.8%	5.6%	0.2%	27.7%	0.6%	0.6%	5.1%
Alameda County, California	100.0%	23.4%	28.1%	9.5%	0.2%	32.1%	0.8%	0.6%	5.3%
Hayward city, California	100.0%	41.2%	13.2%	8.6%	0.2%	29.2%	3.0%	0.6%	4.1%

\* AIAN = American Indian or Alaskan Native; NHOPI = Native Hawaiian or Other Pacific Islander

**Table A.3**  
**Population by Race/Ethnicity, Alameda County, California Places**  
**Census 2020, PL 94-171 File**

Place Name	Total Population	Hispanic, Any Race	Non-Hispanic						
			White	Black	AIAN*	Asian	NHOPI*	Other	Multi
Alameda	78,280	9,435	32,152	4,399	173	25,107	356	556	6,102
Albany	20,271	2,665	8,945	691	17	6,143	9	168	1,633
Ashland	23,823	10,548	2,632	3,840	75	5,511	279	123	815
Berkeley	124,321	17,018	62,450	9,495	226	24,701	253	1,109	9,069
Castro Valley	66,441	12,822	24,412	3,993	141	20,174	278	454	4,167
Cherryland	15,808	9,179	2,279	1,299	54	2,133	283	88	493
Dublin	72,589	8,351	18,149	2,740	376	38,858	202	340	3,573
Emeryville	12,905	1,435	4,564	1,968	23	3,918	39	126	832
Fairview	11,341	3,020	3,331	1,703	15	2,187	159	96	830
Fremont	230,504	29,016	38,160	5,108	470	146,875	967	1,315	8,593
Hayward	162,954	67,079	21,436	14,003	346	47,655	4,915	913	6,607
Livermore	87,955	18,978	48,449	1,604	203	12,633	209	500	5,379
Newark	47,529	14,360	8,945	1,466	90	19,602	657	248	2,161
Oakland	440,646	126,843	120,187	91,561	1,371	69,906	2,668	2,964	25,146
Piedmont	11,270	729	7,062	122	5	2,247	10	99	996
Pleasanton	79,871	7,882	34,332	1,332	137	31,500	110	472	4,106
San Leandro	91,008	25,981	17,865	9,708	224	32,365	712	440	3,713
San Lorenzo	29,581	12,488	5,824	1,424	60	8,248	312	121	1,104
Sunol	922	143	618	4	1	105	5	7	39
Union City	70,143	15,080	7,693	3,006	113	40,270	774	276	2,931
<b>Alameda County</b>	<b>1,682,353</b>	<b>393,749</b>	<b>472,277</b>	<b>159,499</b>	<b>4,131</b>	<b>540,511</b>	<b>13,209</b>	<b>10,440</b>	<b>88,537</b>

\* AIAN = American Indian or Alaskan Native; NHOPI = Native Hawaiian or Other Pacific Islander

**Table A.4**  
**Share of Population by Race/Ethnicity, Alameda County, California Places**  
**Census 2020, PL 94-171 File**

Place Name	Total Population	Hispanic, Any Race	Non-Hispanic						
			White	Black	AIAN*	Asian	NHOPI*	Other	Multi
Alameda	100.0%	12.1%	41.1%	5.6%	0.2%	32.1%	0.5%	0.7%	7.8%
Albany	100.0%	13.1%	44.1%	3.4%	0.1%	30.3%	0.0%	0.8%	8.1%
Ashland	100.0%	44.3%	11.0%	16.1%	0.3%	23.1%	1.2%	0.5%	3.4%
Berkeley	100.0%	13.7%	50.2%	7.6%	0.2%	19.9%	0.2%	0.9%	7.3%
Castro Valley	100.0%	19.3%	36.7%	6.0%	0.2%	30.4%	0.4%	0.7%	6.3%
Cherryland	100.0%	58.1%	14.4%	8.2%	0.3%	13.5%	1.8%	0.6%	3.1%
Dublin	100.0%	11.5%	25.0%	3.8%	0.5%	53.5%	0.3%	0.5%	4.9%
Emeryville	100.0%	11.1%	35.4%	15.2%	0.2%	30.4%	0.3%	1.0%	6.4%
Fairview	100.0%	26.6%	29.4%	15.0%	0.1%	19.3%	1.4%	0.8%	7.3%
Fremont	100.0%	12.6%	16.6%	2.2%	0.2%	63.7%	0.4%	0.6%	3.7%
Hayward	100.0%	41.2%	13.2%	8.6%	0.2%	29.2%	3.0%	0.6%	4.1%
Livermore	100.0%	21.6%	55.1%	1.8%	0.2%	14.4%	0.2%	0.6%	6.1%
Newark	100.0%	30.2%	18.8%	3.1%	0.2%	41.2%	1.4%	0.5%	4.5%
Oakland	100.0%	28.8%	27.3%	20.8%	0.3%	15.9%	0.6%	0.7%	5.7%
Piedmont	100.0%	6.5%	62.7%	1.1%	0.0%	19.9%	0.1%	0.9%	8.8%
Pleasanton	100.0%	9.9%	43.0%	1.7%	0.2%	39.4%	0.1%	0.6%	5.1%
San Leandro	100.0%	28.5%	19.6%	10.7%	0.2%	35.6%	0.8%	0.5%	4.1%
San Lorenzo	100.0%	42.2%	19.7%	4.8%	0.2%	27.9%	1.1%	0.4%	3.7%
Sunol	100.0%	15.5%	67.0%	0.4%	0.1%	11.4%	0.5%	0.8%	4.2%
Union City	100.0%	21.5%	11.0%	4.3%	0.2%	57.4%	1.1%	0.4%	4.2%
<b>Alameda County</b>	<b>100.0%</b>	<b>23.4%</b>	<b>28.1%</b>	<b>9.5%</b>	<b>0.2%</b>	<b>32.1%</b>	<b>0.8%</b>	<b>0.6%</b>	<b>5.3%</b>

\* AIAN = American Indian or Alaskan Native; NHOPI = Native Hawaiian or Other Pacific Islander

**Table A.5****Population by Race/Ethnicity, Hayward, California Neighborhoods****Census 2020, PL 94-171 File**

Neighborhood Name	Total Population	Hispanic,	Non-Hispanic						
		Any Race	White	Black	AIAN*	Asian	NHOPI*	Other	Multi
1 North Hayward	4,931	2,117	1,104	610	5	769	97	32	197
2 Downtown	5,068	1,481	899	987	10	1,324	78	30	259
3 Upper B Street	6,009	2,330	1,270	936	20	1,023	74	49	307
4 Mission-Foothill	8,336	3,419	1,519	1,102	17	1,630	251	41	357
5 Hayward Highlands	10,749	2,130	2,741	1,436	17	3,610	99	57	659
6 Mission-Garin	10,548	4,137	1,353	1,099	23	3,097	277	59	503
7 Fairway Park	9,253	3,909	1,430	497	17	2,804	160	24	412
8 Tennyson-Alquire	14,892	5,432	1,746	801	33	5,738	540	64	538
9 Eden Shores	3,403	348	197	114	2	2,530	58	13	141
10 Glen Eden	14,369	4,921	1,403	809	18	5,855	710	106	547
11 Mt Eden	9,338	2,433	1,591	753	45	3,761	290	47	418
12 Southgate	7,085	2,526	968	554	12	2,295	347	30	353
13 Longwood-Winton-Grove	7,131	4,483	619	359	10	1,289	177	35	159
14 Santa Clara	8,030	3,802	915	684	21	2,035	223	53	297
15 Burbank	6,766	3,090	693	601	13	2,011	109	36	213
16 Jackson Triangle	12,163	6,598	994	1,111	33	2,551	394	83	399
17 Whitman-Mocine	4,785	1,804	563	297	2	1,716	201	21	181
18 Harder-Tennyson	20,098	12,119	1,431	1,253	48	3,617	830	133	667
<b>City of Hayward</b>	<b>162,954</b>	<b>67,079</b>	<b>21,436</b>	<b>14,003</b>	<b>346</b>	<b>47,655</b>	<b>4,915</b>	<b>913</b>	<b>6,607</b>

\* AIAN = American Indian or Alaskan Native; NHOPI = Native Hawaiian or Other Pacific Islander

**Table A.6****Share of Population by Race/Ethnicity, Hayward, California Neighborhoods****Census 2020, PL 94-171 File**

Neighborhood Name	Total Population	Hispanic, Any Race	Non-Hispanic						
			White	Black	AIAN*	Asian	NHOPI*	Other	Multi
1 North Hayward	100.0%	42.9%	22.4%	12.4%	0.1%	15.6%	2.0%	0.6%	4.0%
2 Downtown	100.0%	29.2%	17.7%	19.5%	0.2%	26.1%	1.5%	0.6%	5.1%
3 Upper B Street	100.0%	38.8%	21.1%	15.6%	0.3%	17.0%	1.2%	0.8%	5.1%
4 Mission-Foothill	100.0%	41.0%	18.2%	13.2%	0.2%	19.6%	3.0%	0.5%	4.3%
5 Hayward Highlands	100.0%	19.8%	25.5%	13.4%	0.2%	33.6%	0.9%	0.5%	6.1%
6 Mission-Garin	100.0%	39.2%	12.8%	10.4%	0.2%	29.4%	2.6%	0.6%	4.8%
7 Fairway Park	100.0%	42.2%	15.5%	5.4%	0.2%	30.3%	1.7%	0.3%	4.5%
8 Tennyson-Alquire	100.0%	36.5%	11.7%	5.4%	0.2%	38.5%	3.6%	0.4%	3.6%
9 Eden Shores	100.0%	10.2%	5.8%	3.3%	0.1%	74.3%	1.7%	0.4%	4.1%
10 Glen Eden	100.0%	34.2%	9.8%	5.6%	0.1%	40.7%	4.9%	0.7%	3.8%
11 Mt Eden	100.0%	26.1%	17.0%	8.1%	0.5%	40.3%	3.1%	0.5%	4.5%
12 Southgate	100.0%	35.7%	13.7%	7.8%	0.2%	32.4%	4.9%	0.4%	5.0%
13 Longwood-Winton-Grove	100.0%	62.9%	8.7%	5.0%	0.1%	18.1%	2.5%	0.5%	2.2%
14 Santa Clara	100.0%	47.3%	11.4%	8.5%	0.3%	25.3%	2.8%	0.7%	3.7%
15 Burbank	100.0%	45.7%	10.2%	8.9%	0.2%	29.7%	1.6%	0.5%	3.1%
16 Jackson Triangle	100.0%	54.2%	8.2%	9.1%	0.3%	21.0%	3.2%	0.7%	3.3%
17 Whitman-Mocine	100.0%	37.7%	11.8%	6.2%	0.0%	35.9%	4.2%	0.4%	3.8%
18 Harder-Tennyson	100.0%	60.3%	7.1%	6.2%	0.2%	18.0%	4.1%	0.7%	3.3%
<b>City of Hayward</b>	<b>100.0%</b>	<b>41.2%</b>	<b>13.2%</b>	<b>8.6%</b>	<b>0.2%</b>	<b>29.2%</b>	<b>3.0%</b>	<b>0.6%</b>	<b>4.1%</b>

\* AIAN = American Indian or Alaskan Native; NHOPI = Native Hawaiian or Other Pacific Islander

**Table A.7**

**Compare Total Population and Housing Units by Hayward Neighborhood, Blocks vs Block Group-based Analysis**  
**Census 2020 blocks and block groups**

Neighborhood		Number of Census Blocks	Total Population (block- based)	Total Housing Units (block- based)	Number of Census Block Groups	Total Population (block group- based)	Difference in Total Population (blockgroup vs block)
ID	Neighborhood Name						
1	North Hayward	41	4,931	2,013	3	5,391	460
2	Downtown	86	5,068	2,295	5	8,537	3,469
3	Upper B Street	40	6,009	2,169	4	5,387	-622
4	Mission-Foothill	65	8,336	3,305	5	7,912	-424
5	Hayward Highlands	99	10,749	3,448	5	9,452	-1,297
6	Mission-Garin	81	10,548	3,955	7	11,854	1,306
7	Fairway Park	97	9,253	2,659	7	9,018	-235
8	Tennyson-Alquire	219	14,892	4,490	8	14,892	0
9	Eden Shores	55	3,403	941	1	3,403	0
10	Glen Eden	114	14,369	4,216	10	14,369	0
11	Mt Eden	125	9,338	3,207	6	9,338	0
12	Southgate	80	7,085	2,231	6	7,085	0
13	Longwood-Winton-Grove	46	7,131	1,996	4	7,099	-32
14	Santa Clara	65	8,030	2,560	4	8,030	0
15	Burbank	60	6,766	2,128	4	8,220	1,454
16	Jackson Triangle	58	12,163	3,834	6	12,163	0
17	Whitman-Mocine	33	4,785	1,400	3	4,785	0
18	Harder-Tennyson	112	20,098	5,421	12	20,098	0
<b>City of Hayward</b>		<b>1,476</b>	<b>162,954</b>	<b>52,268</b>	<b>100</b>	<b>167,033</b>	<b>4,079</b>



**Table A.8**  
**Population by Race/Ethnicity, Hayward City, 1980 to 2020**  
**US Census, 1980-2020**

Group	1980	1990	2000	2010	2020
Hispanic	19,160	26,671	47,850	58,730	67,079
White, NH	62,112	57,005	40,896	27,178	21,436
Black, NH	5,187	10,440	14,846	16,297	14,003
AIAN, NH	680	735	570	492	346
AAPI, NH	6,709	16,299	28,700	35,380	52,570
Other, NH	319	348	692	352	913
Multi	na	na	6,476	5,757	6,607
Total	94,167	111,498	140,030	144,186	162,954
Asian, NH	na	na	26,189	31,090	47,655
NHOPI, NH	na	na	2,511	4,290	4,915
AAPI	6,709	16,299	28,700	35,380	52,570

**Table A.9**  
**Share of Population by Race/Ethnicity, Hayward City, 1980 to 2020**  
**US Census, 1980-2020**

Group	1980	1990	2000	2010	2020
Hispanic	20.3%	23.9%	34.2%	40.7%	41.2%
White, NH	66.0%	51.1%	29.2%	18.8%	13.2%
Black, NH	5.5%	9.4%	10.6%	11.3%	8.6%
AIAN, NH	0.7%	0.7%	0.4%	0.3%	0.2%
AAPI, NH	7.1%	14.6%	20.5%	24.5%	32.3%
Other, NH	0.3%	0.3%	0.5%	0.2%	0.6%
Multi	na	na	4.6%	4.0%	4.1%
Total	100.0%	100.0%	100.0%	100.0%	100.0%
Asian, NH	na	na	18.7%	21.6%	29.2%
NHOPI, NH	na	na	1.8%	3.0%	3.0%
AAPI	7.1%	14.6%	20.5%	24.5%	32.3%

NH = Non-Hispanic; AIAN = American Indian / Alaskan Native;  
AAPI = Asian American / Pacific Islander  
NHOPI = Native Hawaiian / Other Pacific Islander

**Table A.10****Total Population: City of Hayward, California  
US Decennial Census: 1870 - 2020**

Year	Total Population	Percent Change in Population	Bay Area Rank, by Total Population
1870	504	--	15th
1880	1,231	144%	16th
1890	1,419	15%	20th
1900	1,965	38%	14th
1910	2,746	40%	16th
1920	3,487	27%	23rd
1930	5,530	59%	24th
1940	6,736	22%	22nd
1950	14,272	112%	20th
1960	72,700	409%	5th
1970	93,058	28%	6th
1980	94,342	1%	7th
1990	111,498	18%	7th
2000	140,030	26%	6th
2010	144,186	3%	6th
2020	162,954	13%	6th

***Hayward City, Incorporated March 11, 1876***

**Table A.11****Voting Age Population, Citizen Voting Age Population: 2022****Census Bureau: American Community Survey: Single Year Estimates for 2022**

Characteristic	California Statewide	Alameda County, California	Hayward city, California
Total Population	39,029,342	1,628,997	156,773
Voting Age Population (18+)	30,530,336	1,311,254	126,661
Non-Citizen Population (18+)	4,451,414	230,111	28,633
Citizen Voting Age Population (18+)	26,078,922	1,081,143	98,028
VAP as Share of Total	78.2%	80.5%	80.8%
Non-Citizen Share of VAP	14.6%	17.5%	22.6%
CVAP as Share of VAP	85.4%	82.5%	77.4%

**Table A.12****Voter Registration: February 2024****California Secretary of State Report of Registration: February 20,2024**

Characteristic	California Statewide	Alameda County, California	Hayward city, California
Total Registered Voters	22,077,000	940,000	81,000
Approx Share, Registered of CVAP	85%	87%	83%
% Democratic	46.6%	60.0%	58.9%
% Republican	24.4%	11.5%	12.2%
% No Party Preference	21.8%	23.5%	23.6%
% Other Party	7.2%	5.0%	5.4%

## Subject: District Elections



**Richard Fierro** [REDACTED]  
to List-Mayor-Council, district@hayward-ca.gov

11:14 AM

You are viewing an attached message. Tripepi Smith & Associates Mail can't verify the authenticity of attached messages.

**CAUTION:** This is an external email. Do not click on links or open attachments unless you know the content is safe.

Good morning, I am writing in opposition to switching to district elections. I recognize the city is being forced to do this because of a rogue lawsuit.

In my 35+ years as a citizen of Hayward I have never felt that any decisions the Council made prioritized one area of the city over the other.

When I look at our current Council I see what is probably the most diverse Council in the bay area. Switching to districts does not guarantee anyone will be elected if it does that is the antithesis of what is supposed to happen.

If we have to switch my preference would be for as many at large seats as possible.

I also would be willing to vote for a one time assessment or tax to raise money to fight this extortion

Sincerely

Rich Fierro