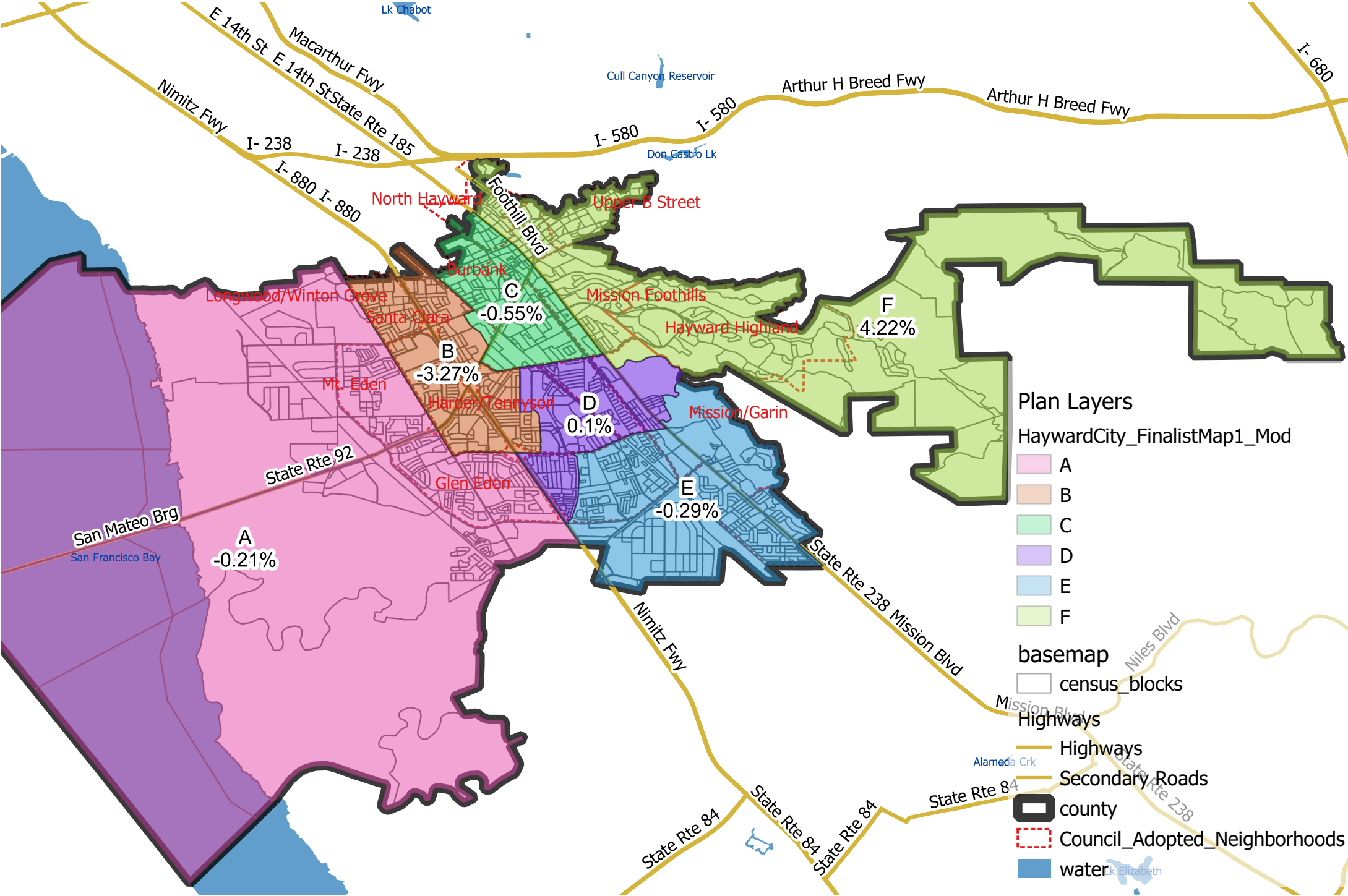


Hayward City Council - Finalist Map 1 Modified



Hayward City Council - Finalist Map 1 Modified

District	Total Population	Deviation	% Deviation	Total Citizen Voting Age Population	Total Registration as of Nov 2022
A	27,139	-56	-0.21%	19,254	14,610
B	26,305	-890	-3.27%	15,503	12,870
C	27,046	-149	-0.55%	15,171	11,556
D	27,222	27	0.10%	13,837	10,544
E	27,117	-78	-0.29%	18,829	14,778
F	28,343	1,148	4.22%	20,226	14,614

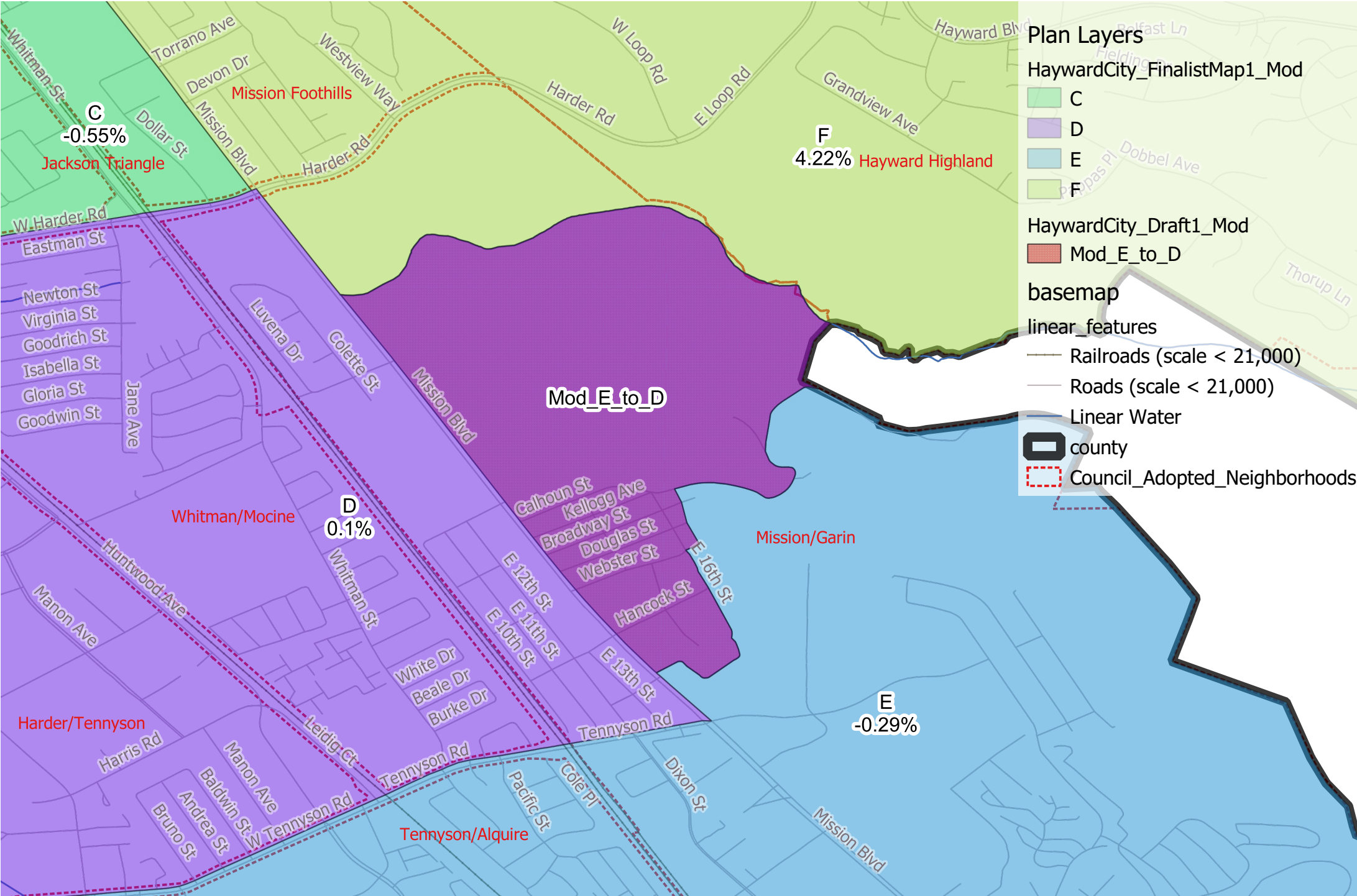
Source: CA Adjusted 2020 Census Data, Citizen Voting Age Population Data, and Nov 2022 Registration Data via the CA Statewide Database

Citizen Voting Age Population						
District	% Latino CVAP	% White CVAP	% Black CVAP	% Indigenous CVAP	% Asian CVAP	% Hawaiian or Other Pac. Is. CVAP
A	29.2%	13.4%	9.1%	0.9%	44.5%	1.6%
B	37.2%	20.1%	9.3%	0.6%	29.2%	2.3%
C	37.6%	18.2%	15.7%	0.1%	25.4%	1.0%
D	42.4%	16.9%	11.6%	0.5%	21.0%	5.6%
E	26.9%	19.3%	8.2%	0.3%	41.5%	2.8%
F	21.7%	34.9%	19.3%	1.3%	20.8%	1.3%

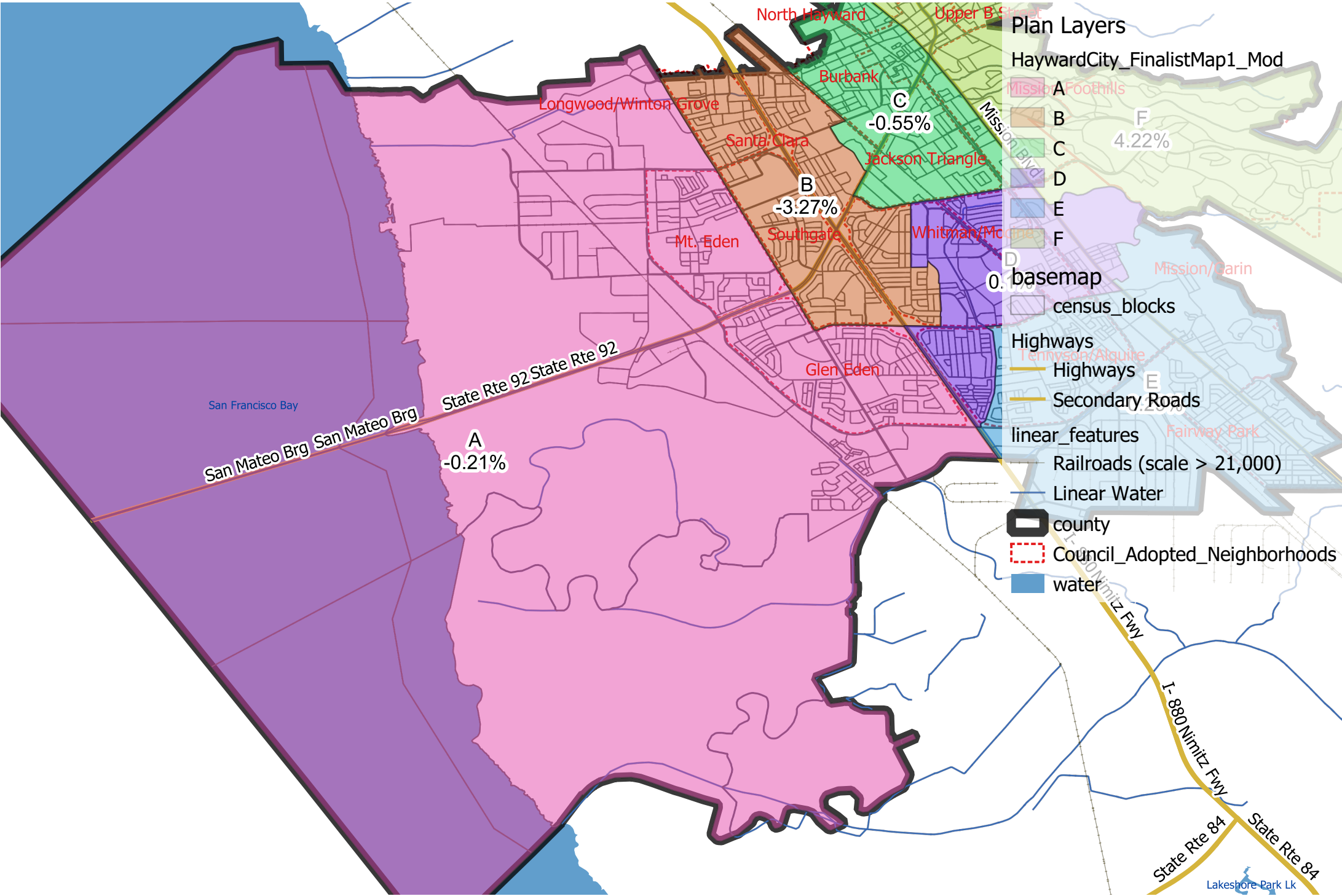
Source: Nov 2022 Registration and Citizen Voting Age Population (CVAP) Special Tabulation from the 2018-2022 5-Year American Community Survey via CA Statewide Database

Note: Racial and ethnic characteristics of the Citizens Voting Age Population (CVAP) are tabulated according to Department of Justice standards.

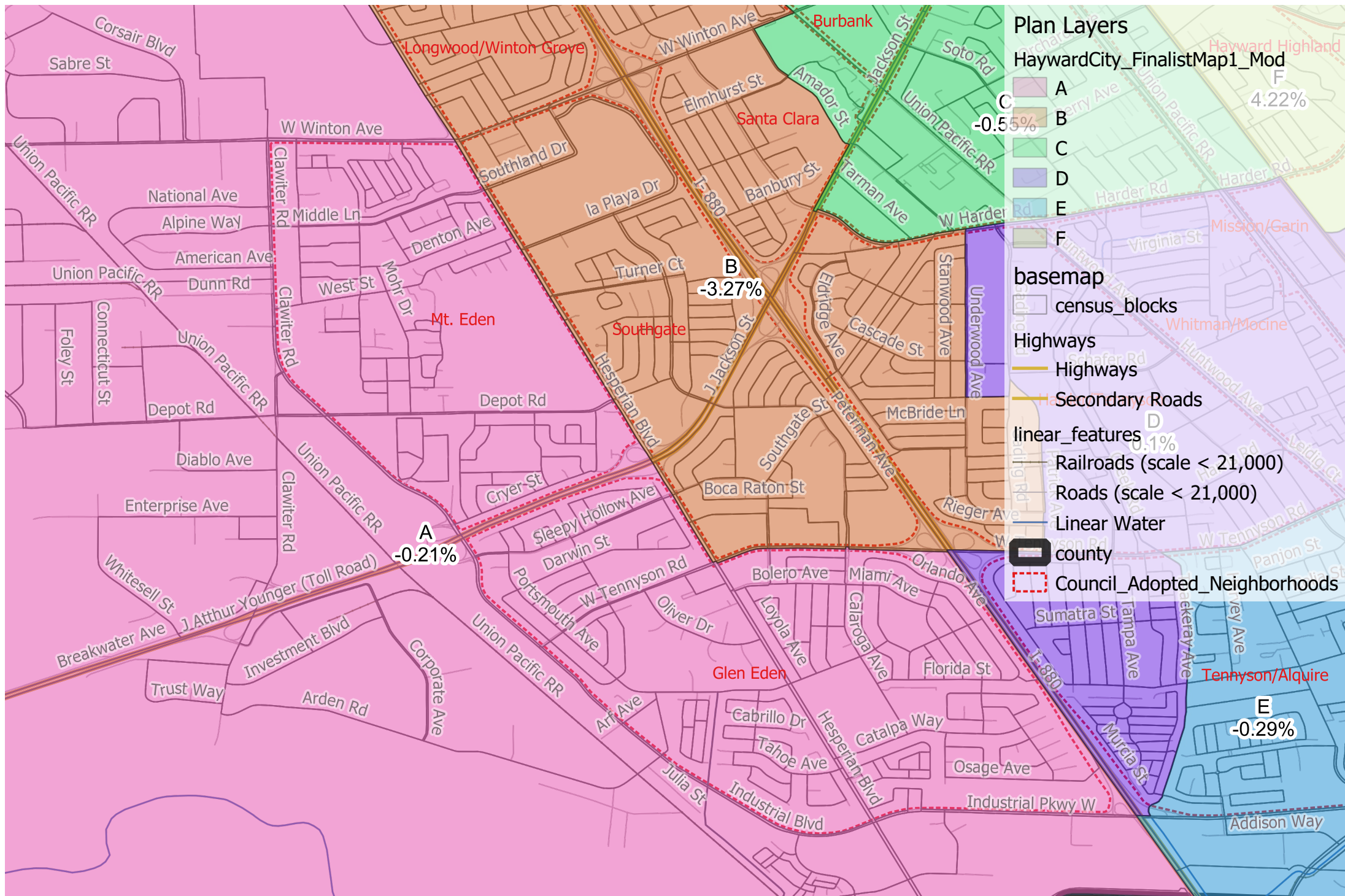
Hayward City Council - Finalist Map 1 Modified
Draft Map 1 Modification - Area Moved From District E to District D



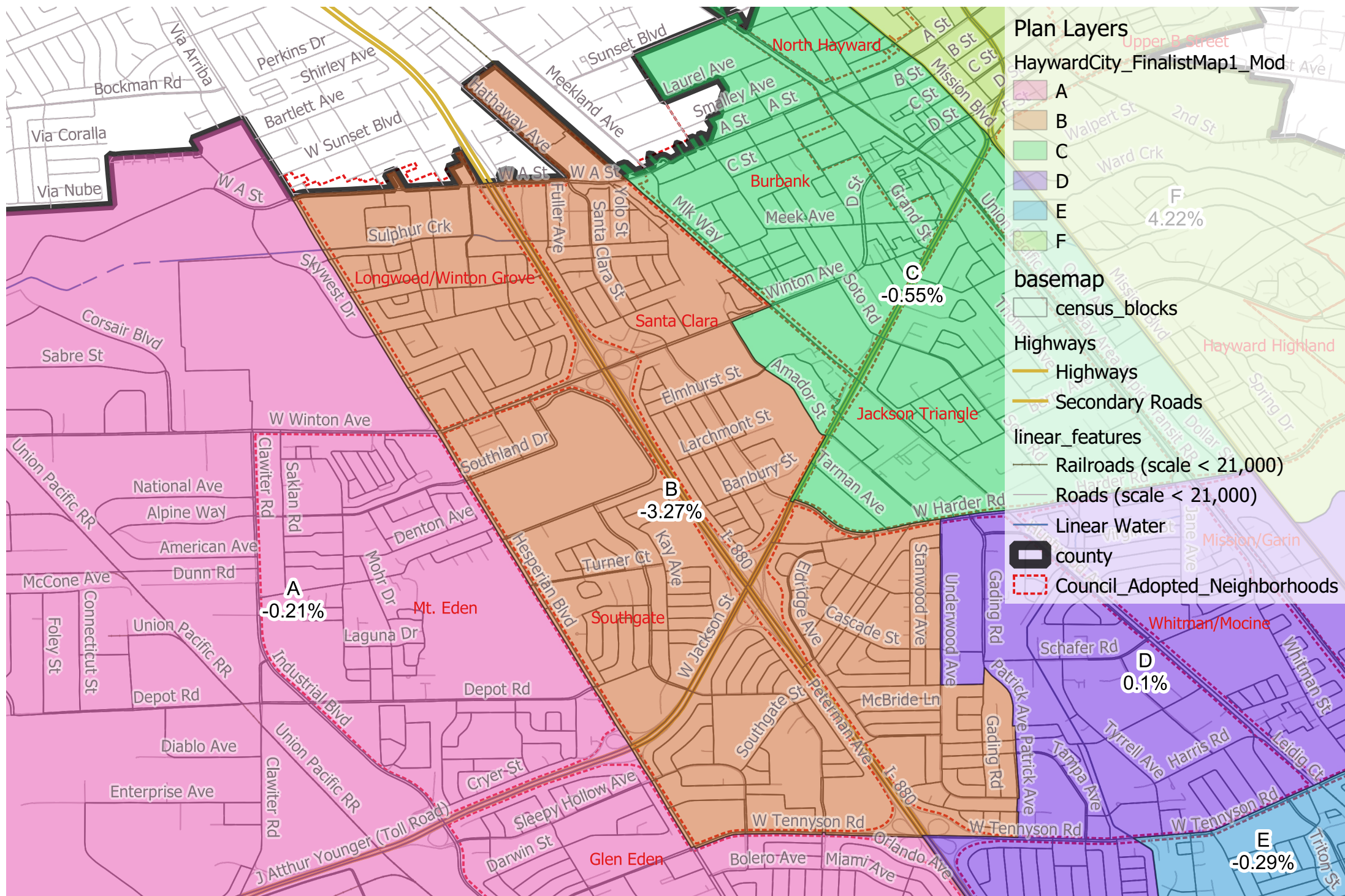
Hayward City Council - Finalist Map 1 Modified
District A



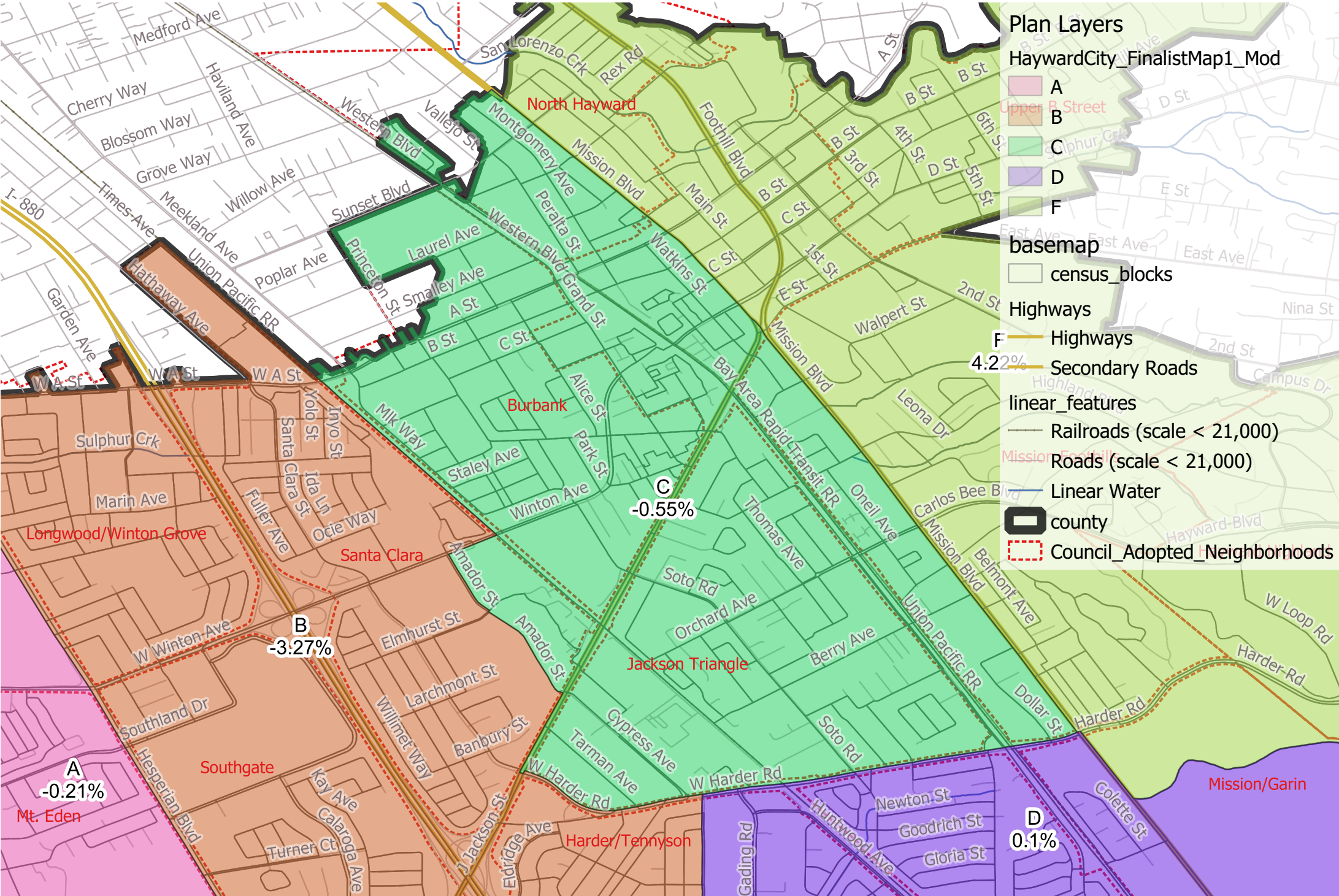
Hayward City Council - Finalist Map 1 Modified District A



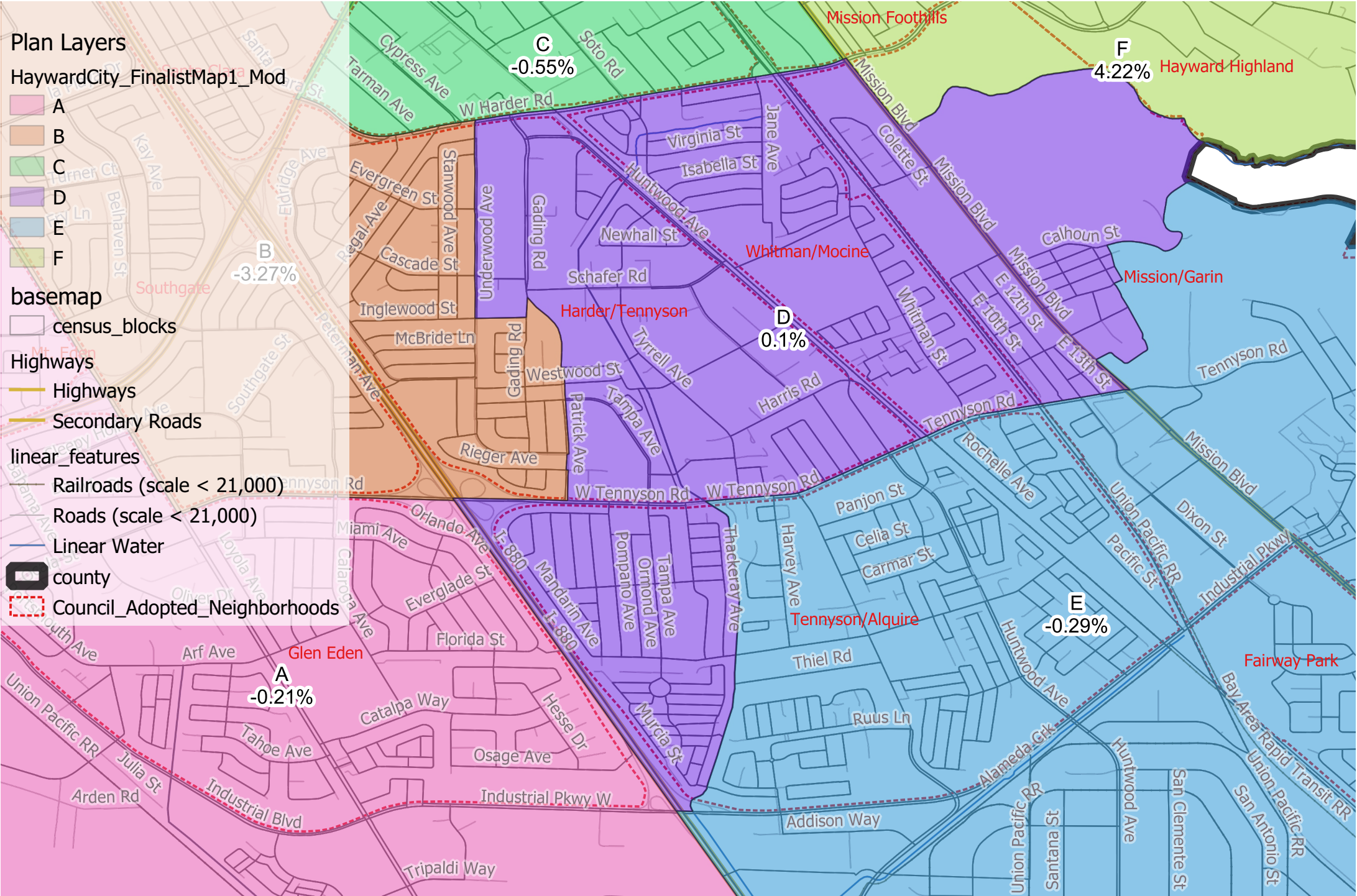
Hayward City Council - Finalist Map 1 Modified District B



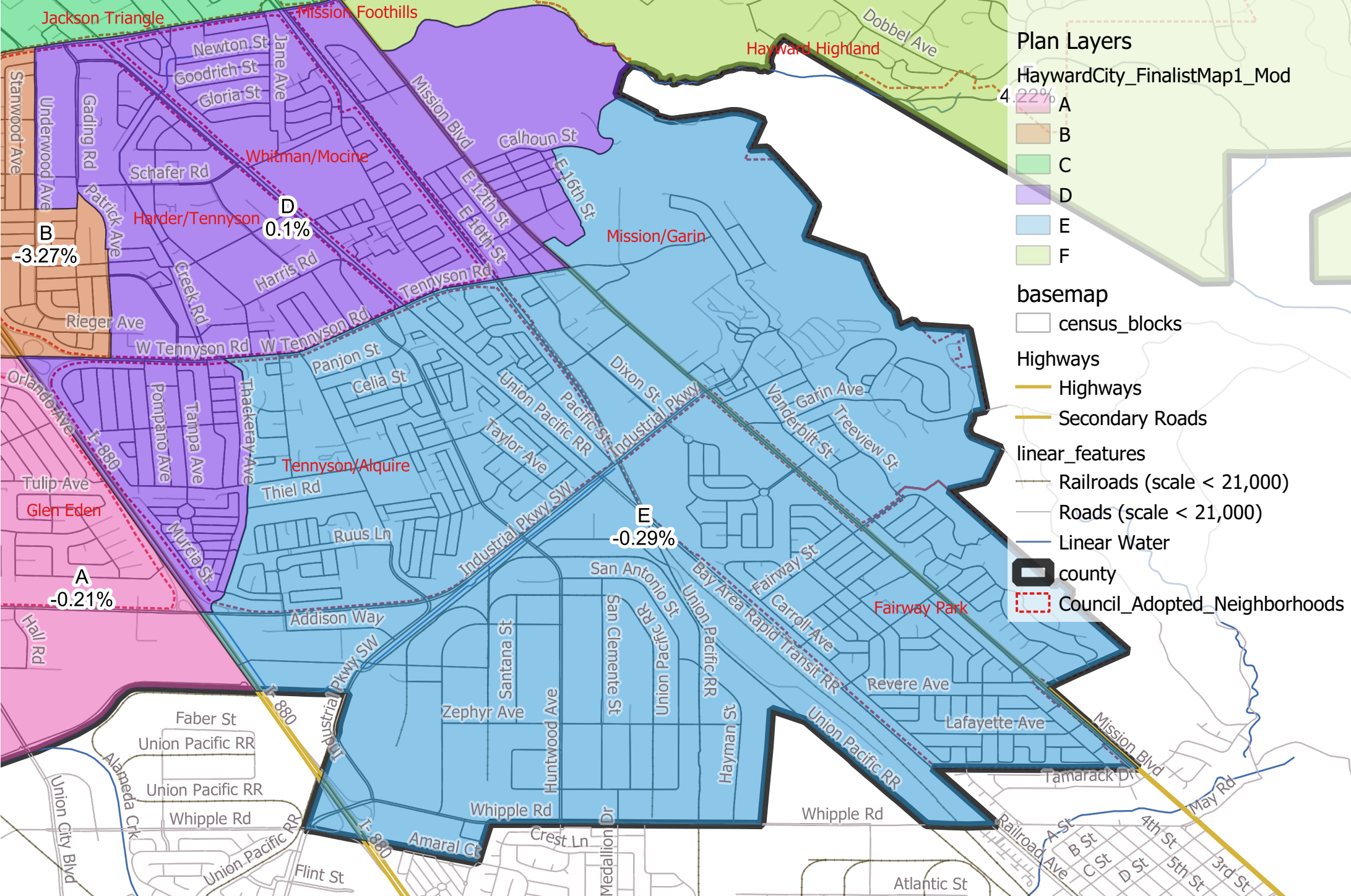
Hayward City Council - Finalist Map 1 Modified
District C



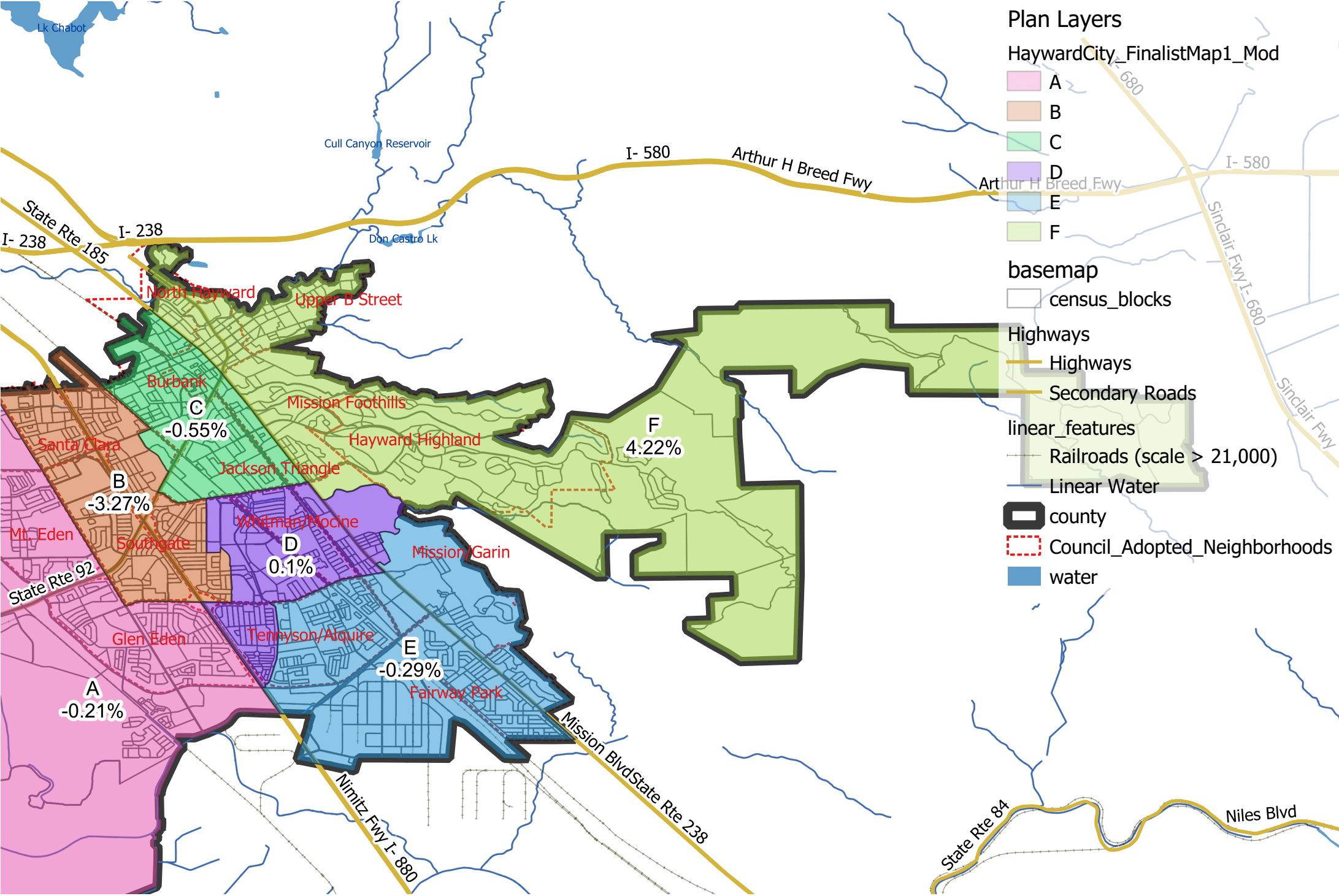
Hayward City Council - Finalist Map 1 Modified
District D



Hayward City Council - Finalist Map 1 Modified
District E



Hayward City Council - Finalist Map 1 Modified
District F



Hayward City Council - Finalist Map 1 Modified
District F

