

Submission ID: MyCityCouncil\_SD\_09072024182\_Finalist Map 1 Modified Modified

Plan name: Finalist Map 1 Modified Modified

District type: City Council District

Starting Map: current\_draft

General comments: This modification of "Finalist Map 1 modified" reduces population spread from 7.49% to 2.89%. It extends district B from Amador St to the tracks, a more obvious boundary, thereby keeping the Santa Clara neighborhood whole. District C is extended to Foothill Blvd and San Lorenzo Creek, boundaries that are at least as obvious and appropriate as Mission Blvd. The districts look slightly less compact, but for good reasons. Submitted by Dave Robinson.

Submitted by: N/A

Compliance check:

- Contiguity: N

- Total population % deviation: N

- Assignment: N

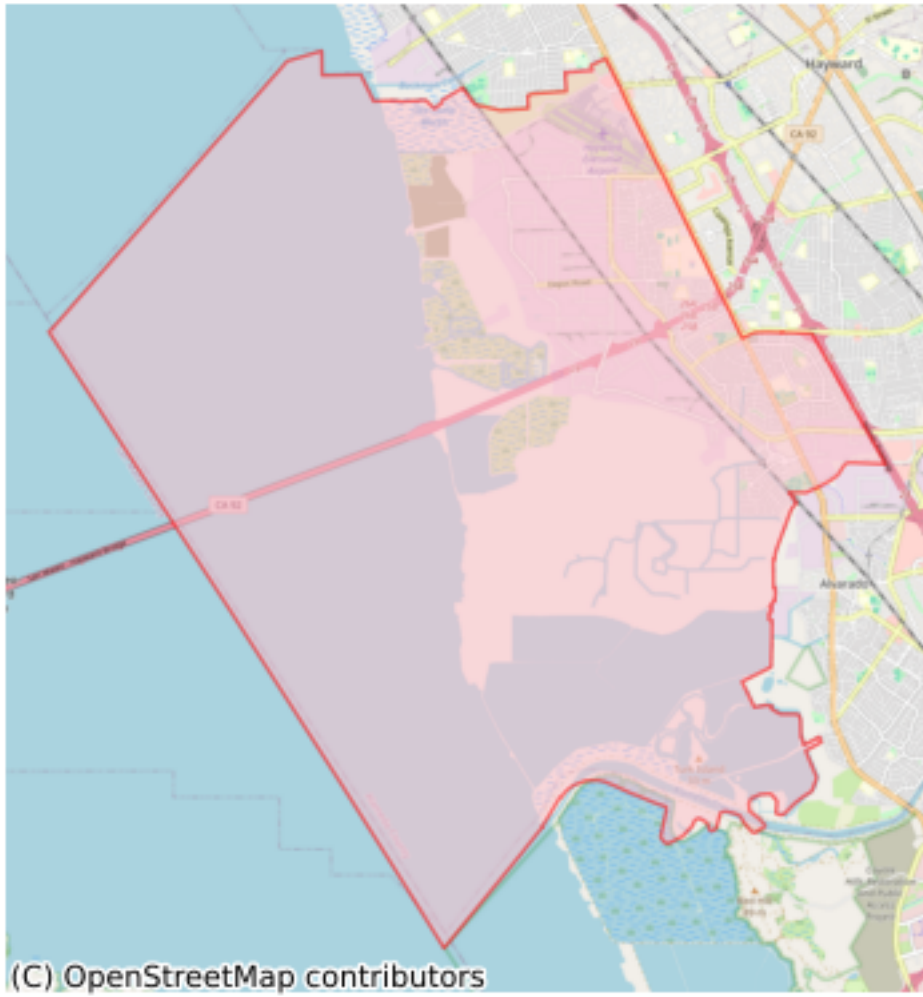
I acknowledge that my District map and description will be sent to the City Council: Y

District name	% Deviation	Comments
A	-0.21	
D	0.1	
E	-0.29	
F	-0.11	
C	-1.19	Extended to Foothill Blvd and San Lorenzo Creek, equalizing population between B, C, and F.
B	1.7	Extended from Amador St to tracks, keeping Santa Clara neighborhood whole and equalizing population.

District name : A

% Deviation : -0.21

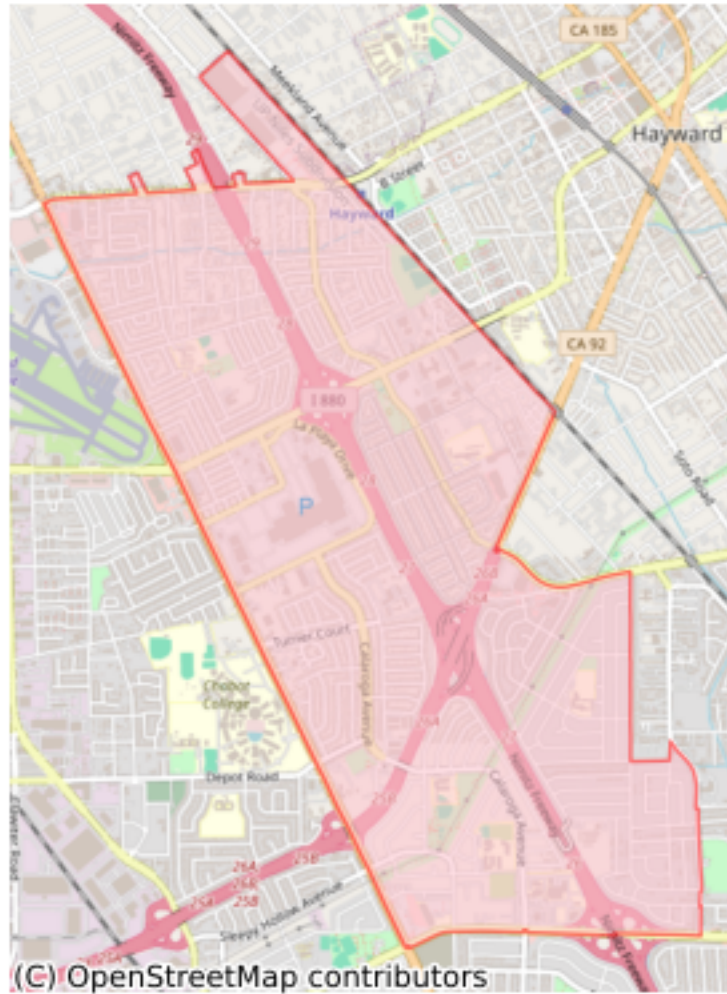
Comments :



District name : B

% Deviation : 1.7

Comments : Extended from Amador St to tracks, keeping Santa Clara neighborhood whole and equalizing population.



District name : C

% Deviation : -1.19

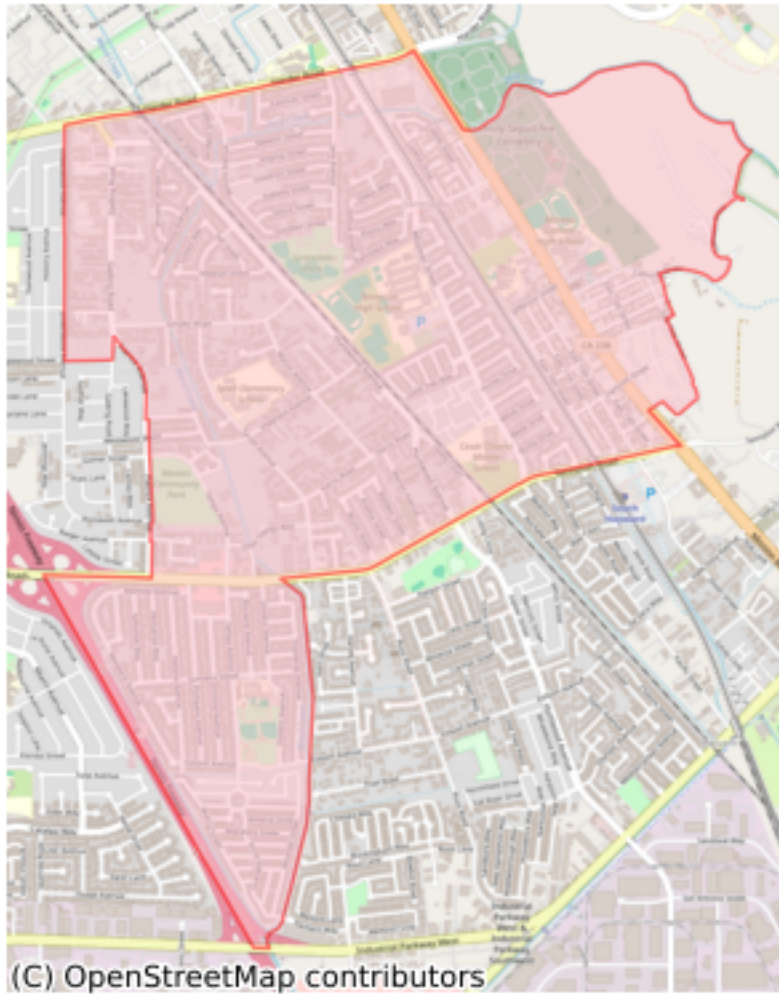
Comments : Extended to Foothill Blvd and San Lorenzo Creek, equalizing population between B, C, and F.



District name : D

% Deviation : 0.1

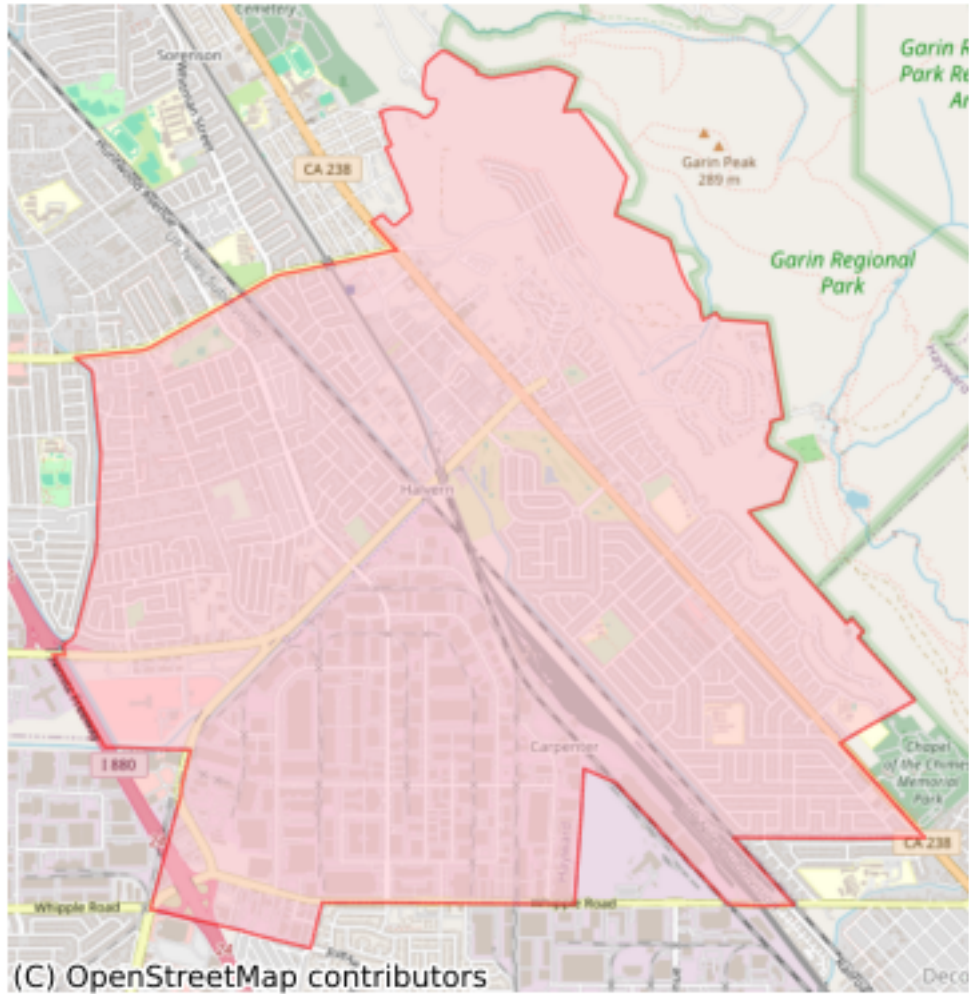
Comments :



District name : E

% Deviation : -0.29

Comments :



District name : F

% Deviation : -0.11

Comments :

