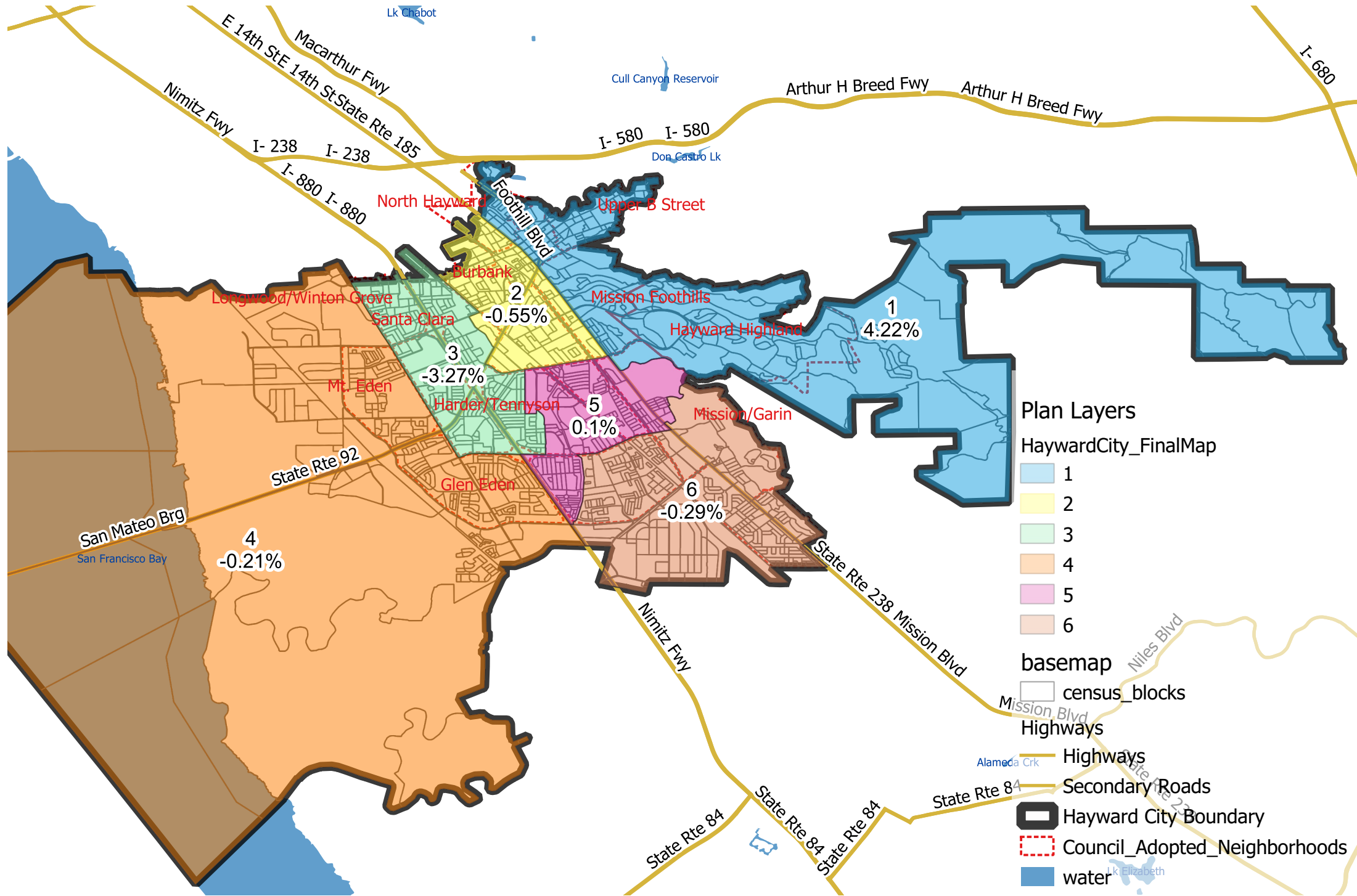


Hayward City Council - Adopted Map



Plan Layers

HaywardCity_FinalMap

- 1
- 2
- 3
- 4
- 5
- 6

basemap

- census_blocks
- Highways
- Highways
- Secondary Roads
- Hayward City Boundary
- Council_Adopted_Neighborhoods
- water

Hayward City Council - Adopted Map

District	Total Population	Deviation	% Deviation	Total Citizen Voting Age Population	Total Registration as of Nov 2022
1	28,343	1,148	4.22%	20,226	14,614
2	27,046	-149	-0.55%	15,171	11,556
3	26,305	-890	-3.27%	15,503	12,870
4	27,139	-56	-0.21%	19,254	14,610
5	27,222	27	0.10%	13,837	10,544
6	27,117	-78	-0.29%	18,829	14,778

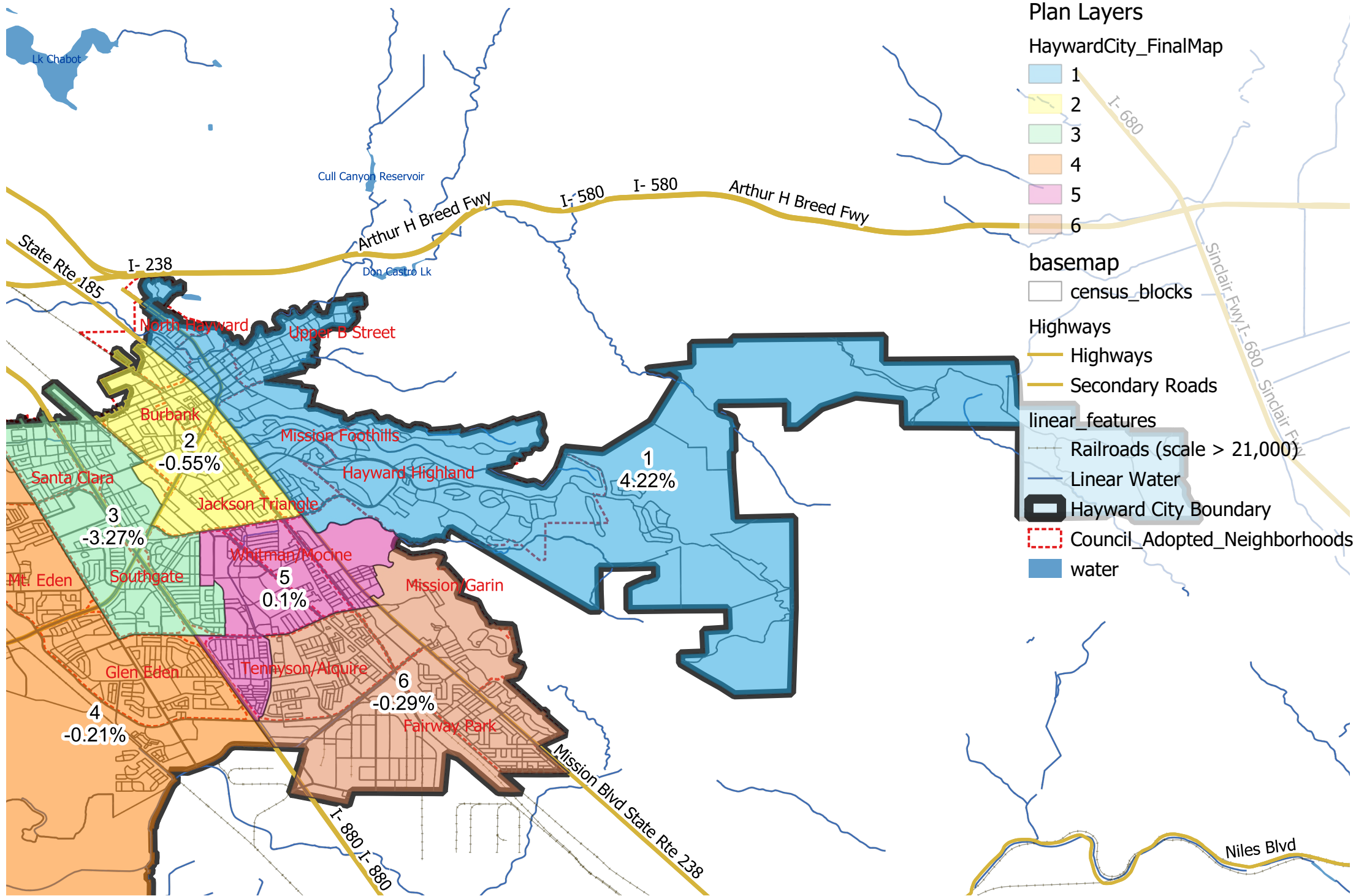
Source: CA Adjusted 2020 Census Data, Citizen Voting Age Population Data, and Nov 2022 Registration Data via the CA Statewide Database

Citizen Voting Age Population						
District	% Latino CVAP	% White CVAP	% Black CVAP	% Indigenous CVAP	% Asian CVAP	% Hawaiian or Other Pac. Is. CVAP
1	21.7%	34.9%	19.3%	1.3%	20.8%	1.3%
2	37.6%	18.2%	15.7%	0.1%	25.4%	1.0%
3	37.2%	20.1%	9.3%	0.6%	29.2%	2.3%
4	29.2%	13.4%	9.1%	0.9%	44.5%	1.6%
5	42.4%	16.9%	11.6%	0.5%	21.0%	5.6%
6	26.9%	19.3%	8.2%	0.3%	41.5%	2.8%

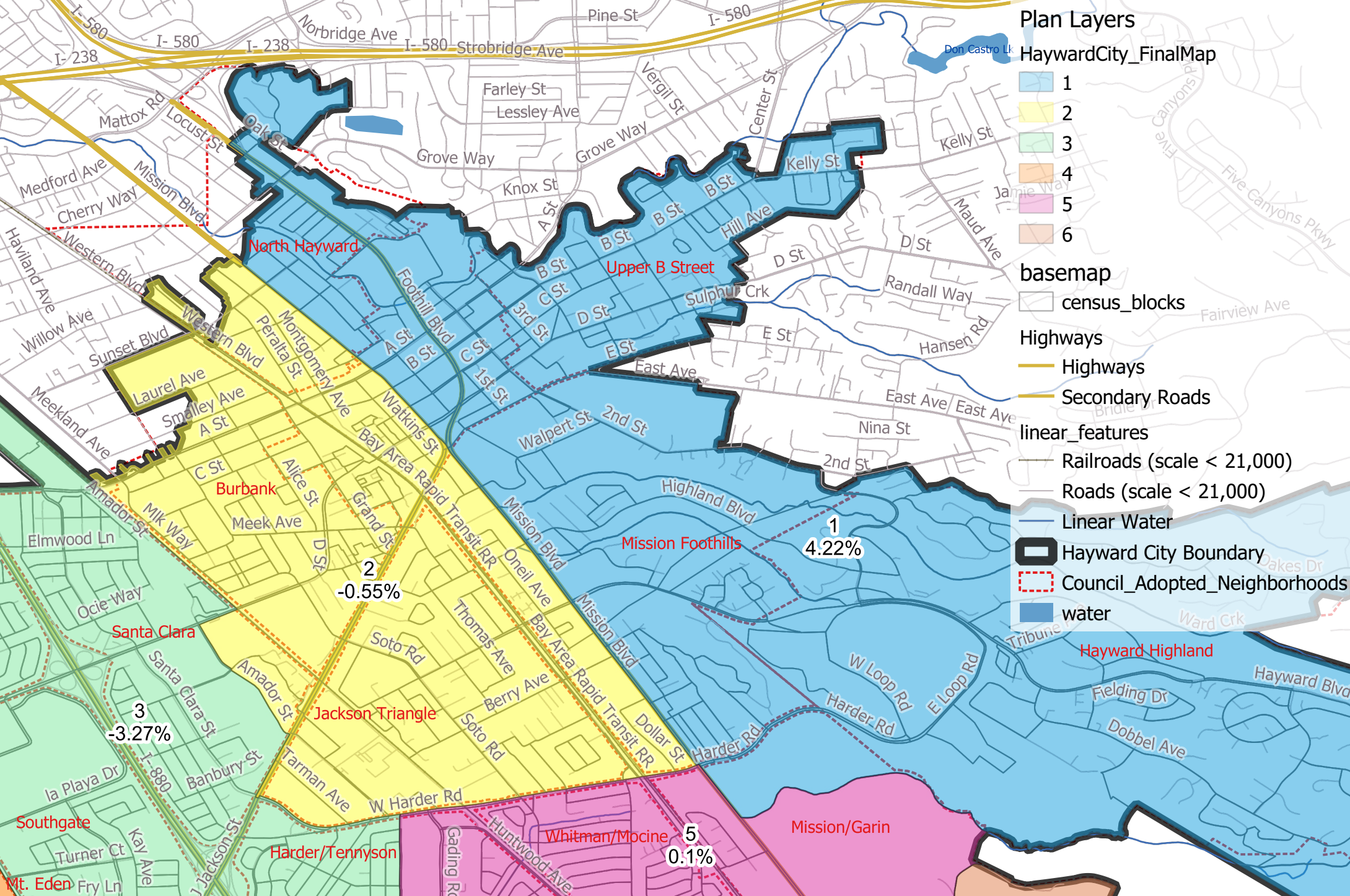
Source: Nov 2022 Registration and Citizen Voting Age Population (CVAP) Special Tabulation from the 2018-2022 5-Year American Community Survey via CA Statewide Database

Note: Racial and ethnic characteristics of the Citizens Voting Age Population (CVAP) are tabulated according to Department of Justice standards.

Hayward City Council - Adopted Map District 1



Hayward City Council - Adopted Map District 1 (Detail)



Plan Layers

- HaywardCity_FinalMap
 - 1
 - 2
 - 3
 - 4
 - 5
 - 6
- basemap
 - census_blocks
- Highways
 - Highways
 - Secondary Roads
- linear_features
 - Railroads (scale < 21,000)
 - Roads (scale < 21,000)
 - Linear Water
- Hayward City Boundary
- Council_Adopted_Neighborhoods
- water

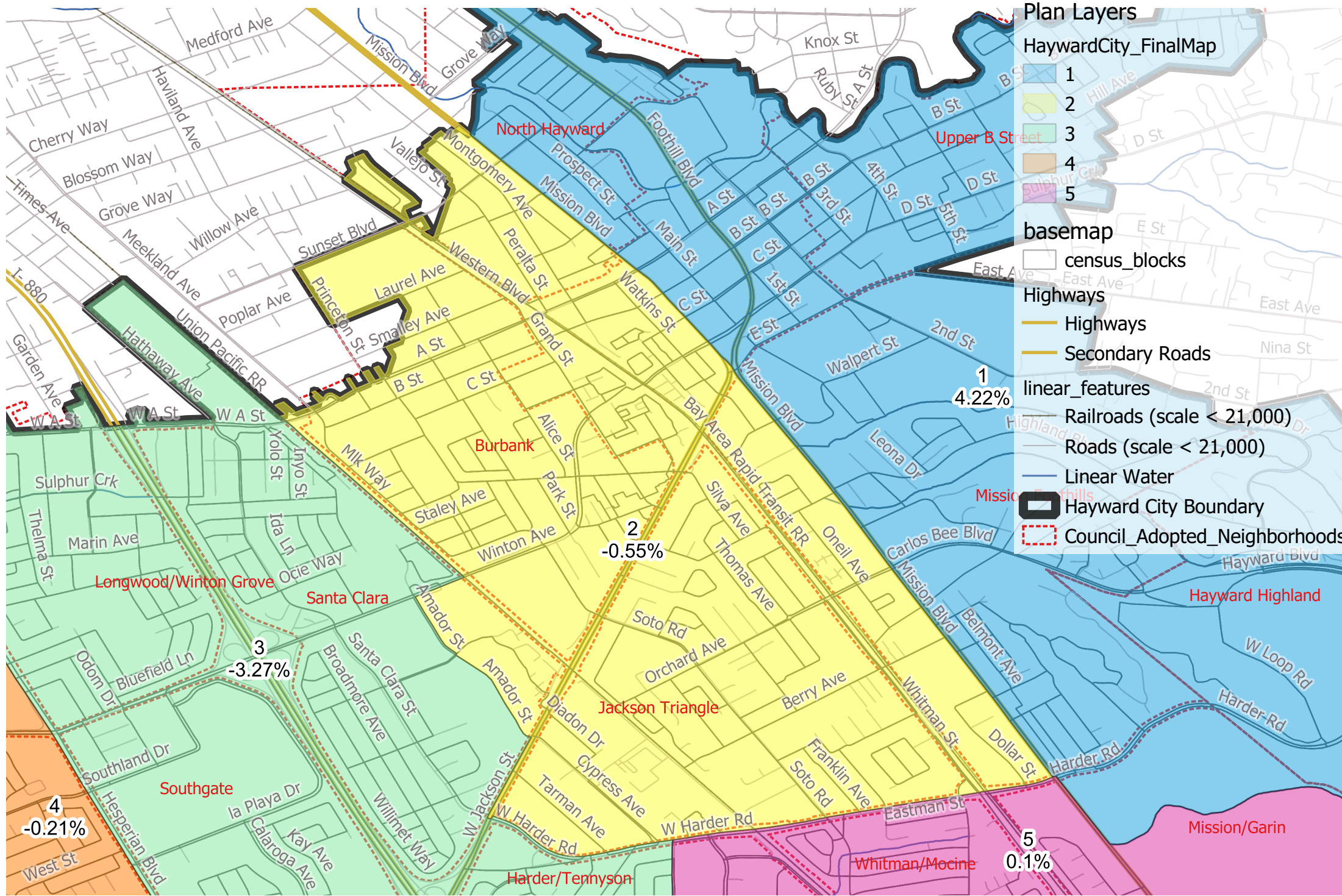
1
4.22%

2
-0.55%

3
-3.27%

5
0.1%

Hayward City Council - Adopted Map District 2



Plan Layers

HaywardCity_FinalMap

- 1
- 2
- 3
- 4
- 5

basemap

- census_blocks

Highways

- Highways
- Secondary Roads

linear_features

- Railroads (scale < 21,000)
- Roads (scale < 21,000)
- Linear Water

Hayward City Boundary

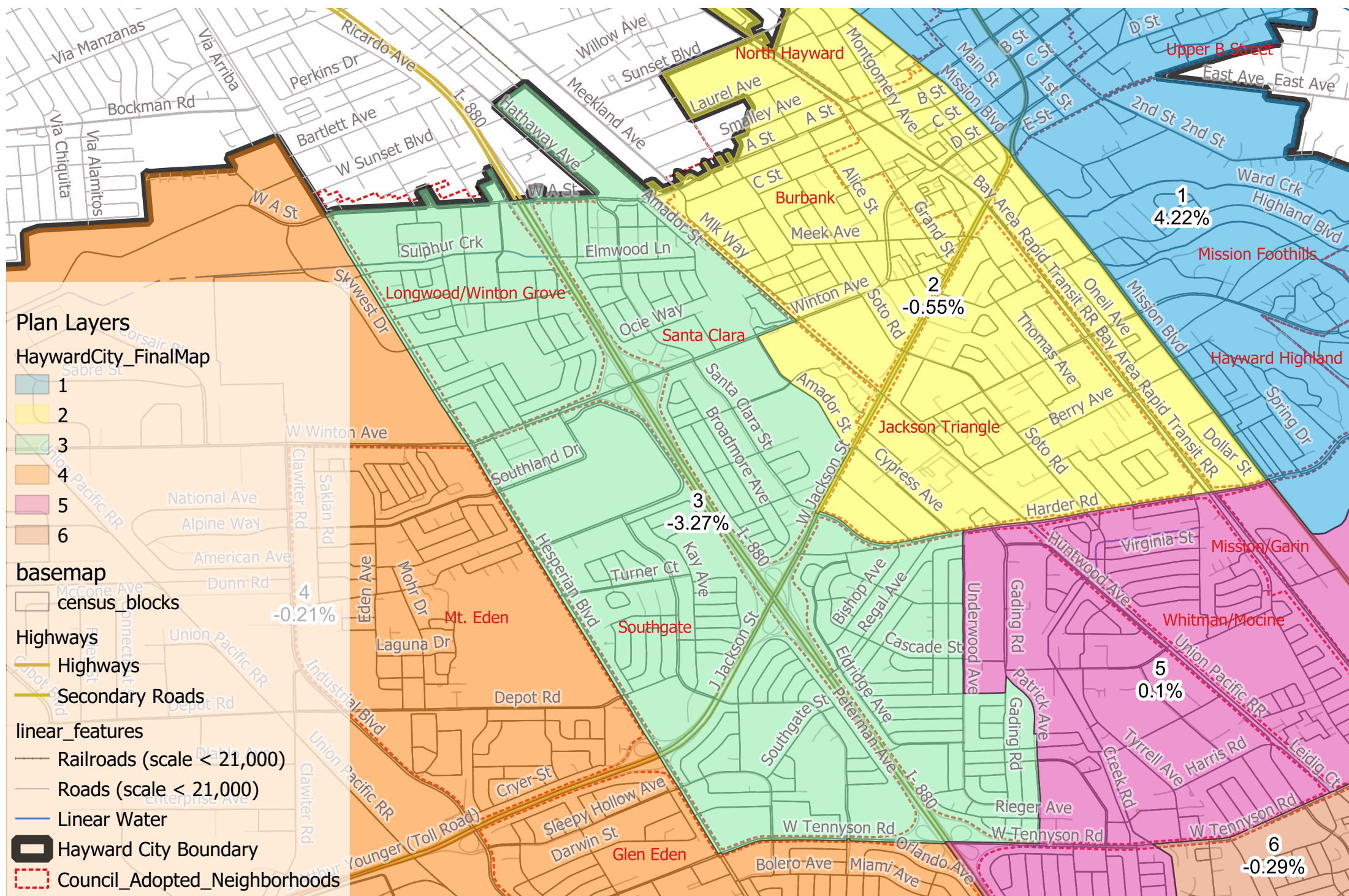
- Hayward City Boundary

Council_Adopted_Neighborhoods

- Council_Adopted_Neighborhoods

Hayward City Council - Adopted Map

District 3



Plan Layers

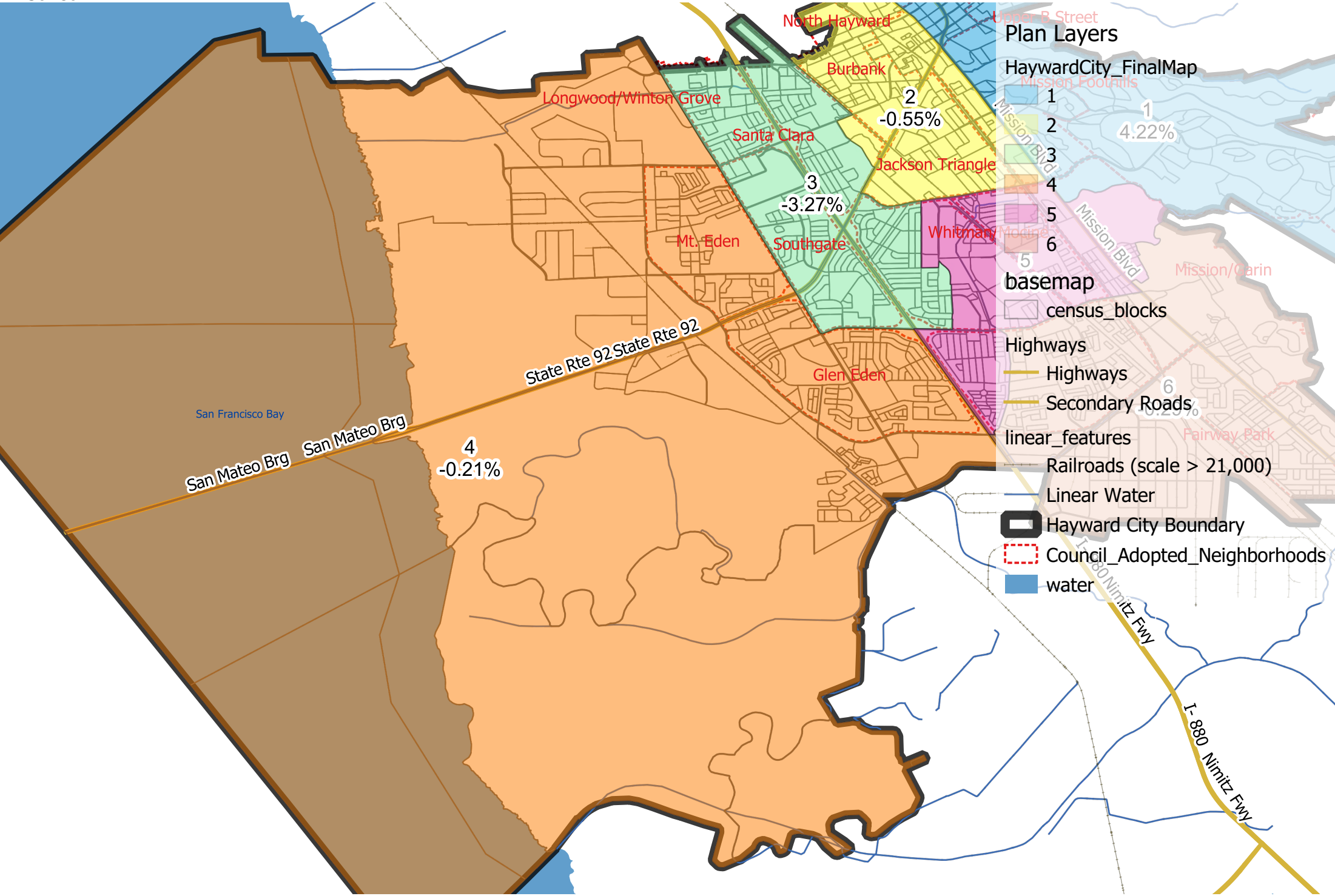
HaywardCity_FinalMap

- 1
- 2
- 3
- 4
- 5
- 6

basemap

- census_blocks
- Highways
 - Highways
 - Secondary Roads
- linear_features
 - Railroads (scale < 21,000)
 - Roads (scale < 21,000)
 - Linear Water
- Hayward City Boundary
- Council_Adopted_Neighborhoods

Hayward City Council - Adopted Map District 4



Plan Layers

HaywardCity_FinalMap

- 1
- 2
- 3
- 4
- 5
- 6

basemap

- census_blocks

Highways

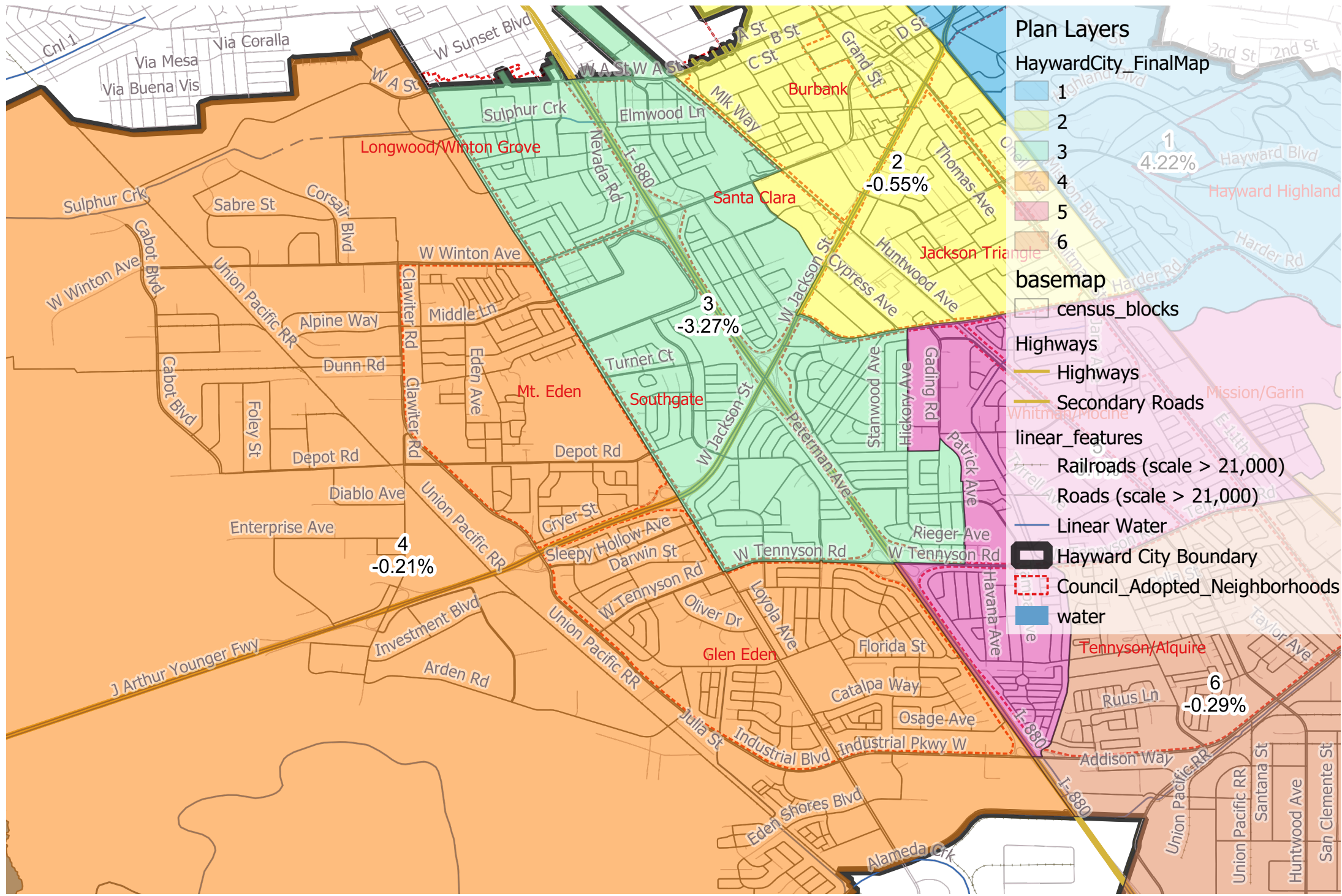
- Highways
- Secondary Roads

linear_features

- Railroads (scale > 21,000)
- Linear Water

- Hayward City Boundary
- Council_Adopted_Neighborhoods
- water

Hayward City Council - Adopted Map District 4 (Detail)



Plan Layers

HaywardCity_FinalMap

- 1
- 2
- 3
- 4
- 5
- 6

basemap

- census_blocks

Highways

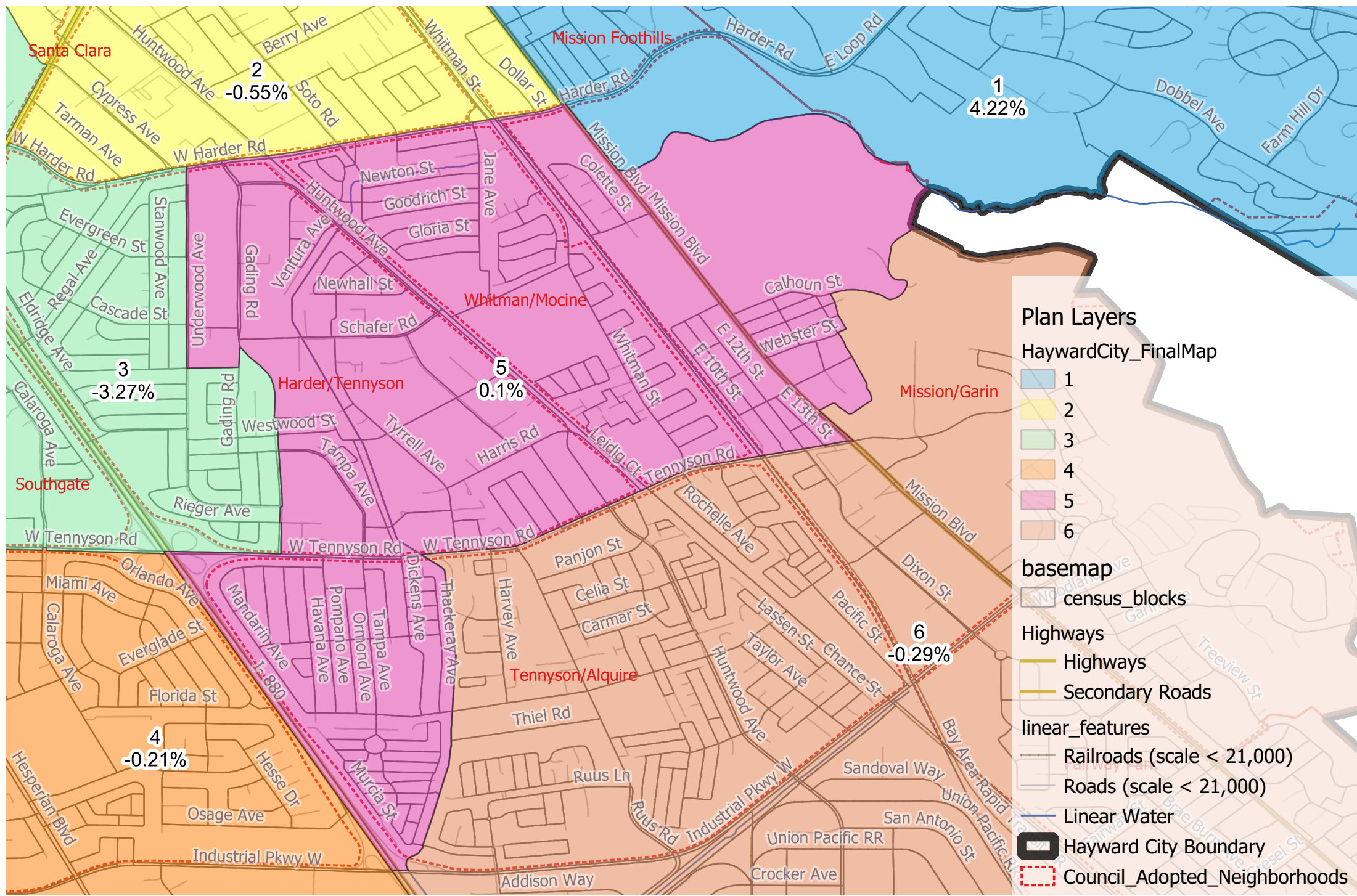
- Highways
- Secondary Roads

linear_features

- Railroads (scale > 21,000)
- Roads (scale > 21,000)
- Linear Water
- Hayward City Boundary
- Council_Adopted_Neighborhoods
- water

Hayward City Council - Adopted Map

District 5



Plan Layers

HaywardCity_FinalMap

- 1
- 2
- 3
- 4
- 5
- 6

basemap

- census_blocks

Highways

- Highways
- Secondary Roads

linear_features

- Railroads (scale < 21,000)
- Roads (scale < 21,000)
- Linear Water

- Hayward City Boundary
- Council_Adopted_Neighborhoods

Hayward City Council - Adopted Map

District 6

