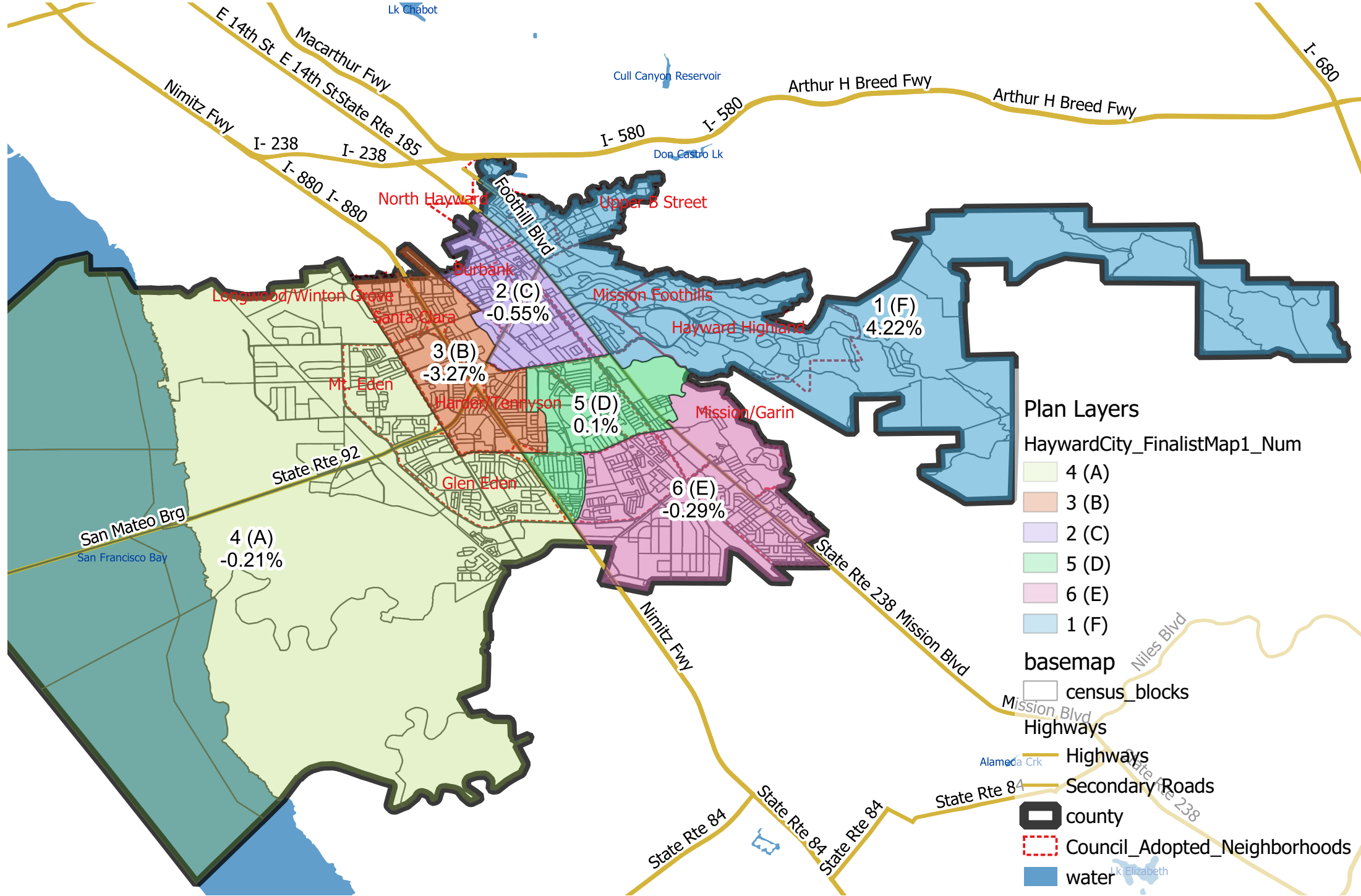


# Hayward City Council - Finalist Map 1 Modified with Former Draft District Letter



# Hayward City Council - Finalist Map 1 Modified with Former Draft District Letter

District	Total Population	Deviation	% Deviation	Total Citizen Voting Age Population	Total Registration as of Nov 2022
1 (F)	28,343	1,148	4.22%	20,226	14,614
2 (C)	27,046	-149	-0.55%	15,171	11,556
3 (B)	26,305	-890	-3.27%	15,503	12,870
4 (A)	27,139	-56	-0.21%	19,254	14,610
5 (D)	27,222	27	0.10%	13,837	10,544
6 (E)	27,117	-78	-0.29%	18,829	14,778

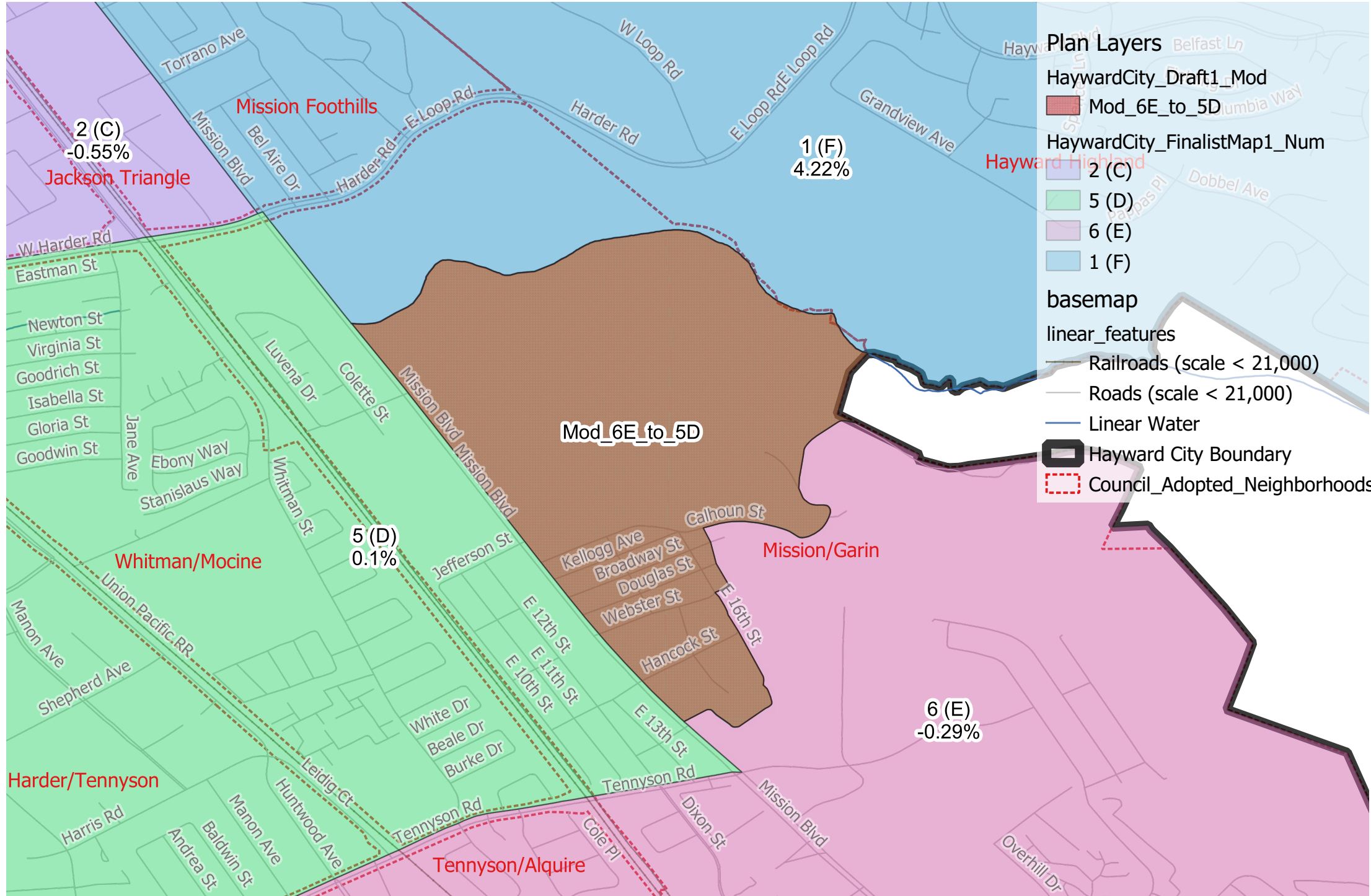
Source: CA Adjusted 2020 Census Data, Citizen Voting Age Population Data, and Nov 2022 Registration Data via the CA Statewide Database

Citizen Voting Age Population						
District	% Latino CVAP	% White CVAP	% Black CVAP	% Indigenous CVAP	% Asian CVAP	% Hawaiian or Other Pac. Is. CVAP
1 (F)	21.7%	34.9%	19.3%	1.3%	20.8%	1.3%
2 (C)	37.6%	18.2%	15.7%	0.1%	25.4%	1.0%
3 (B)	37.2%	20.1%	9.3%	0.6%	29.2%	2.3%
4 (A)	29.2%	13.4%	9.1%	0.9%	44.5%	1.6%
5 (D)	42.4%	16.9%	11.6%	0.5%	21.0%	5.6%
6 (E)	26.9%	19.3%	8.2%	0.3%	41.5%	2.8%

Source: Nov 2022 Registration and Citizen Voting Age Population (CVAP) Special Tabulation from the 2018-2022 5-Year American Community Survey via CA Statewide Database

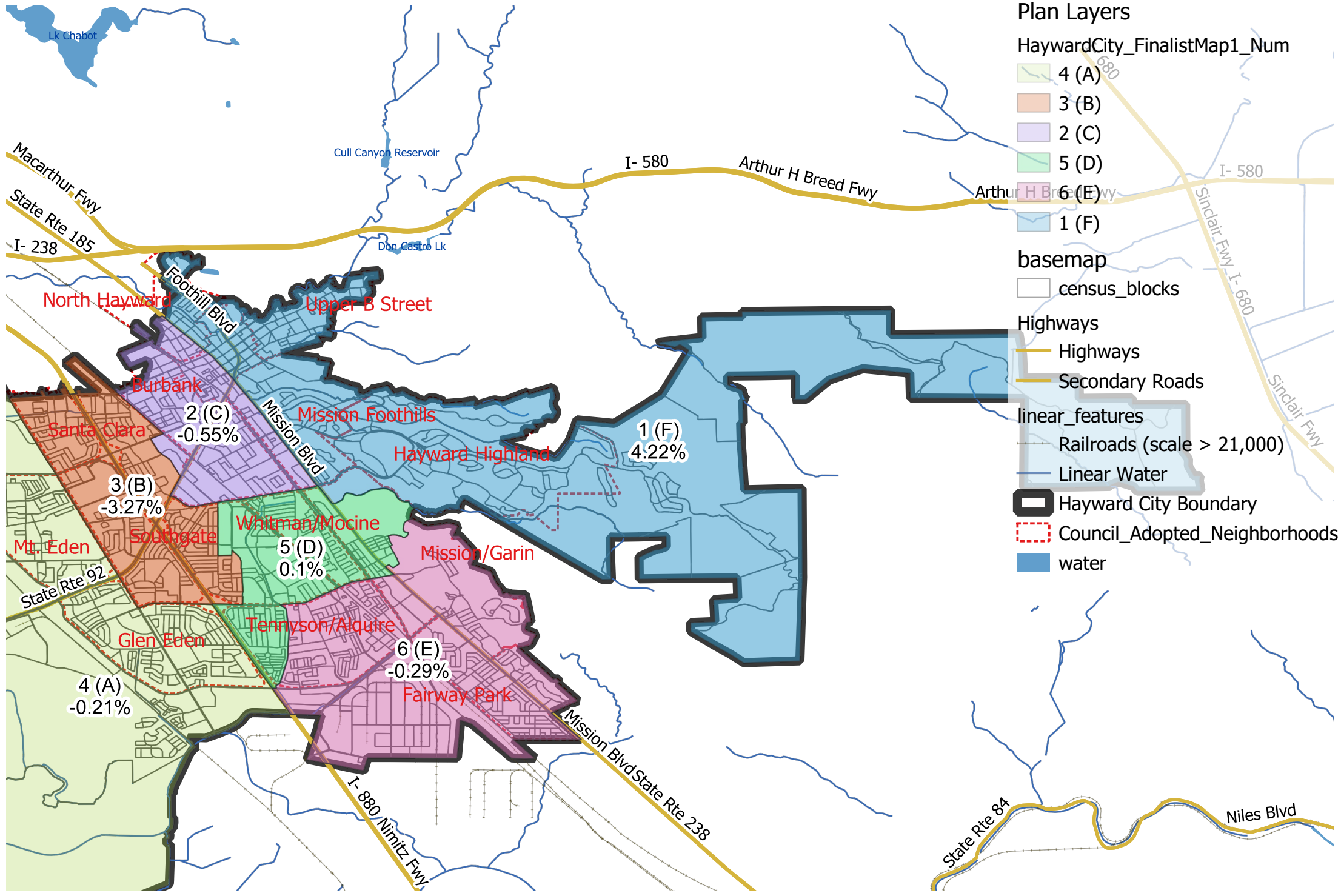
Note: Racial and ethnic characteristics of the Citizens Voting Age Population (CVAP) are tabulated according to Department of Justice standards.

Hayward City Council - Finalist Map 1 Modified  
 Draft Map 1 Modification - Area Moved From District 6(E) to District 5(D)



# Hayward City Council - Finalist Map 1 Modified

## District 1 (Formerly District F)



### Plan Layers

HaywardCity\_FinalistMap1\_Num

- 4 (A)
- 3 (B)
- 2 (C)
- 5 (D)
- 6 (E)
- 1 (F)

### basemap

- census\_blocks

### Highways

- Highways
- Secondary Roads

### linear\_features

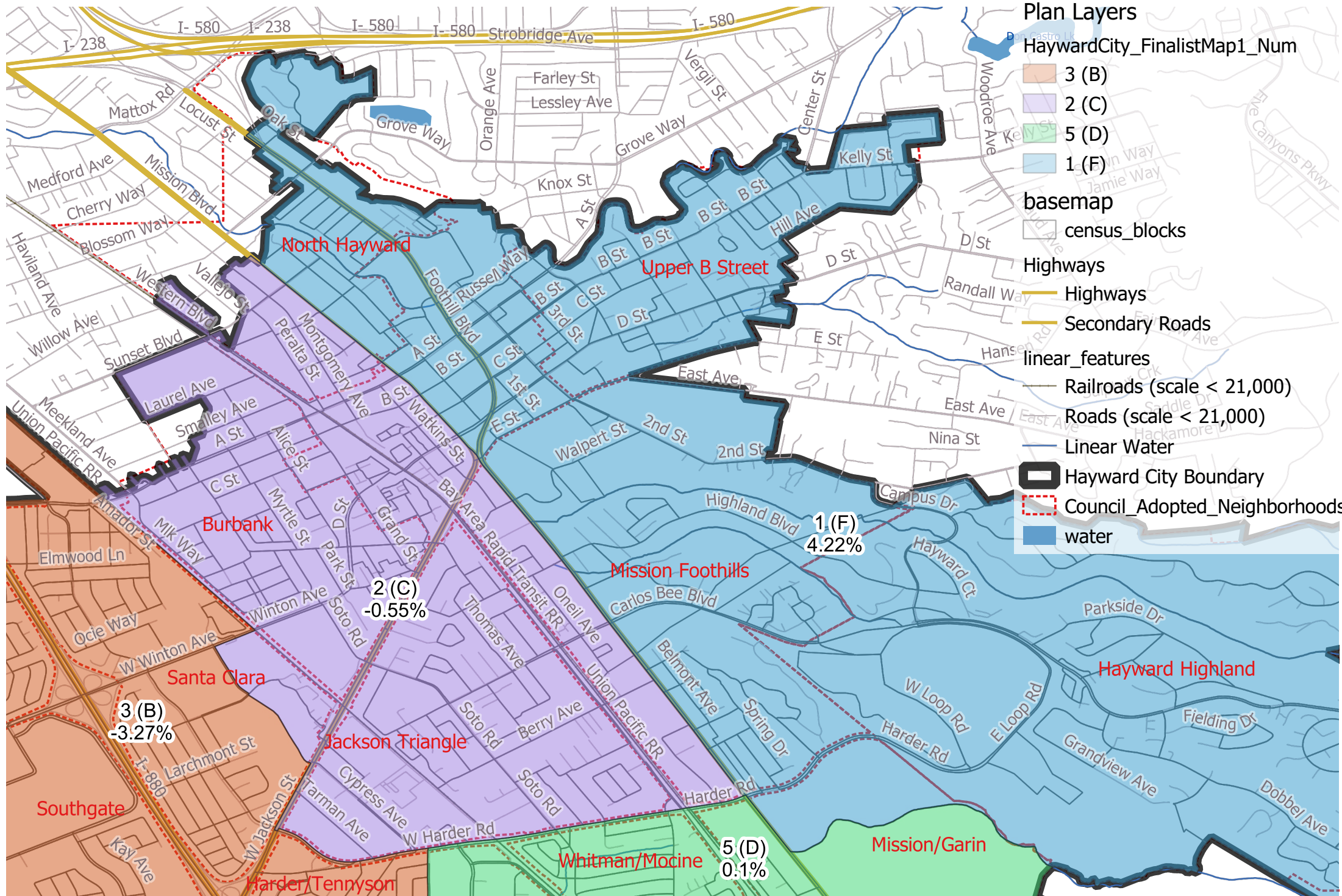
- Railroads (scale > 21,000)
- Linear Water

### Other Features

- Hayward City Boundary
- Council\_Adopted\_Neighborhoods
- water

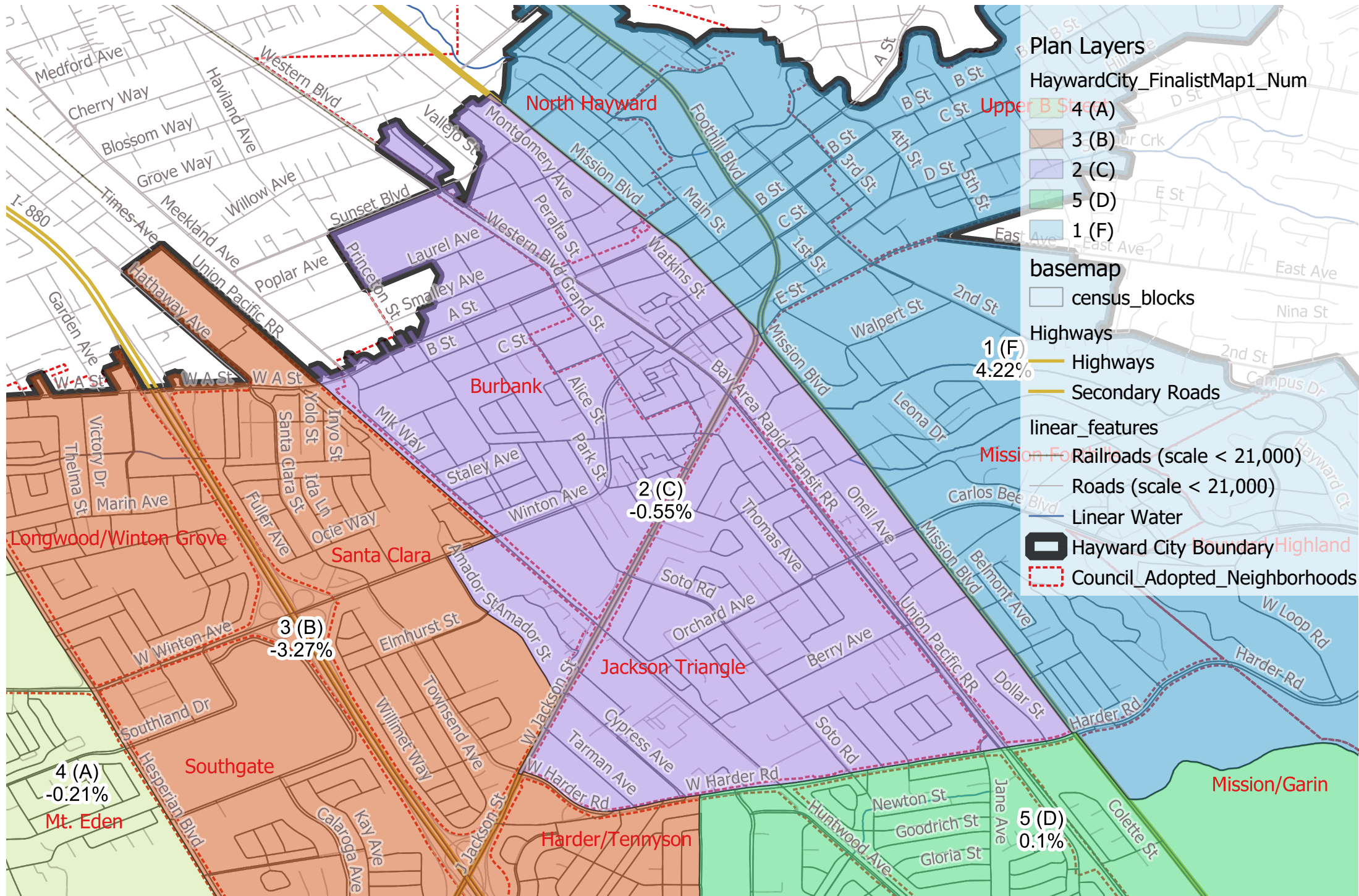
# Hayward City Council - Finalist Map 1 Modified

## District 1 (Formerly District F)



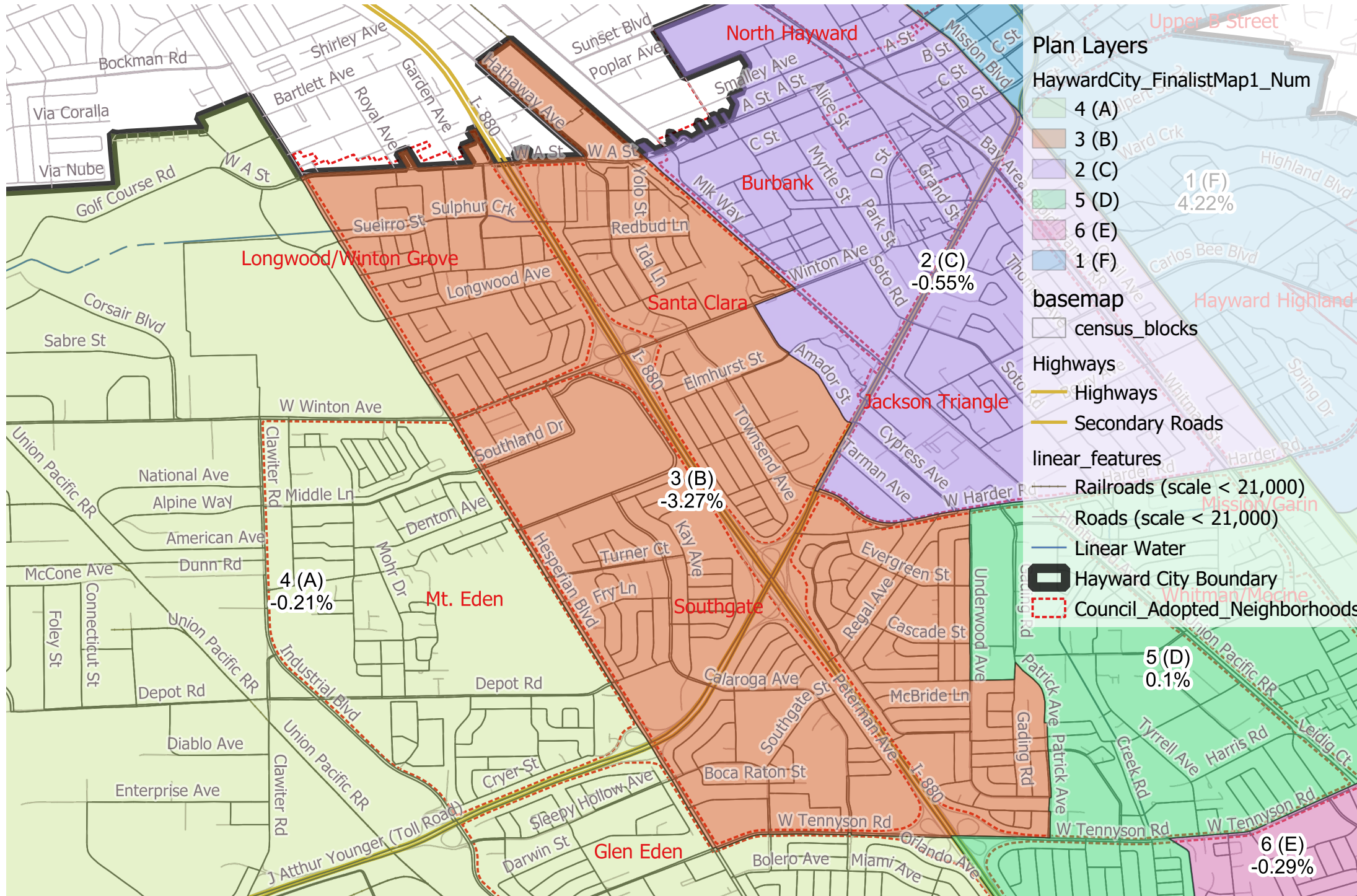
# Hayward City Council - Finalist Map 1 Modified

## District 2 (Formerly District C)



# Hayward City Council - Finalist Map 1 Modified

## District 3 (Formerly District B)



### Plan Layers

HaywardCity\_FinalistMap1\_Num

- 4 (A)
- 3 (B)
- 2 (C)
- 5 (D)
- 6 (E)
- 1 (F)

basemap

- census\_blocks

Highways

- Highways
- Secondary Roads

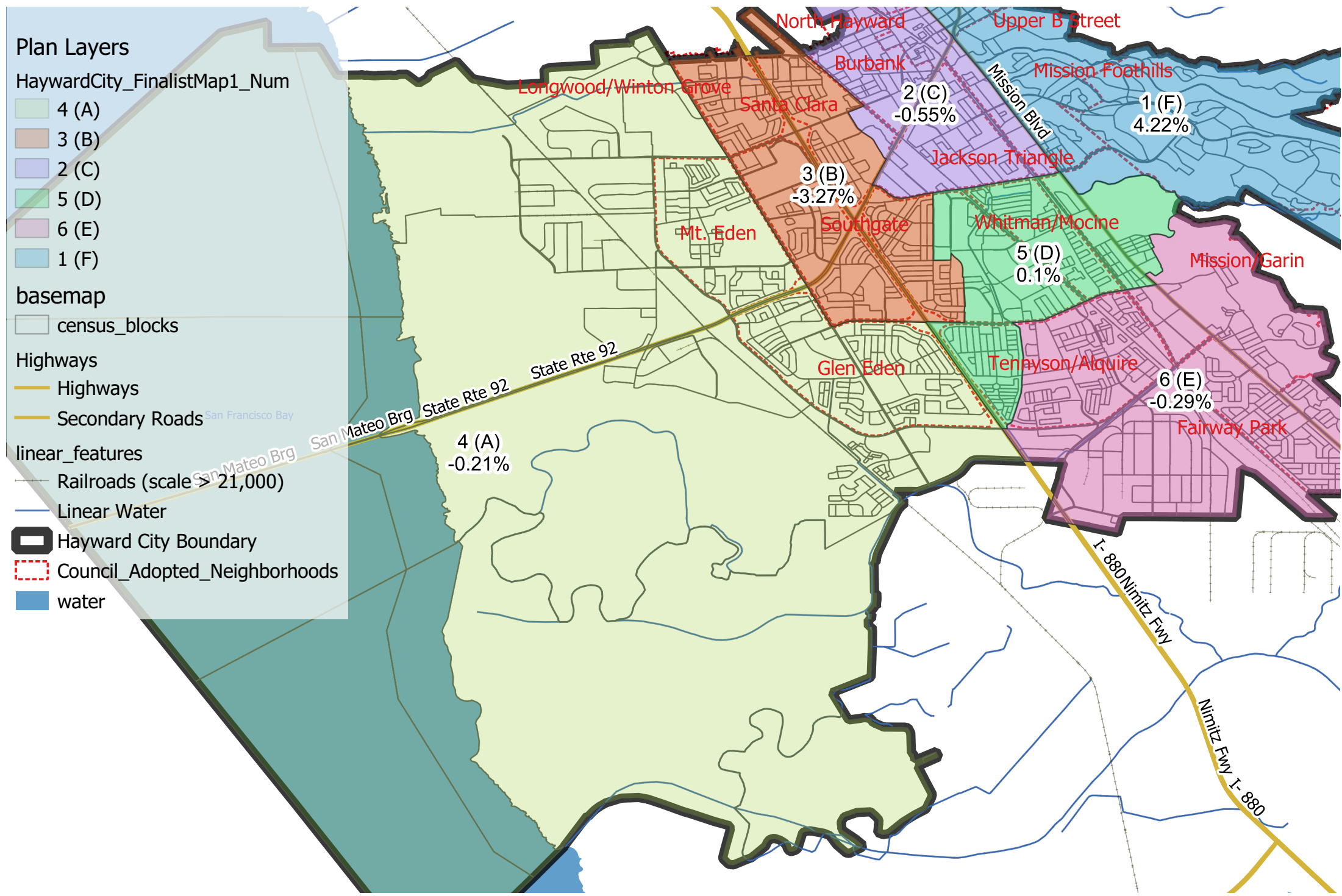
linear\_features

- Railroads (scale < 21,000)
- Roads (scale < 21,000)
- Linear Water

Hayward City Boundary  
 Council\_Adopted\_Neighborhoods

# Hayward City Council - Finalist Map 1 Modified

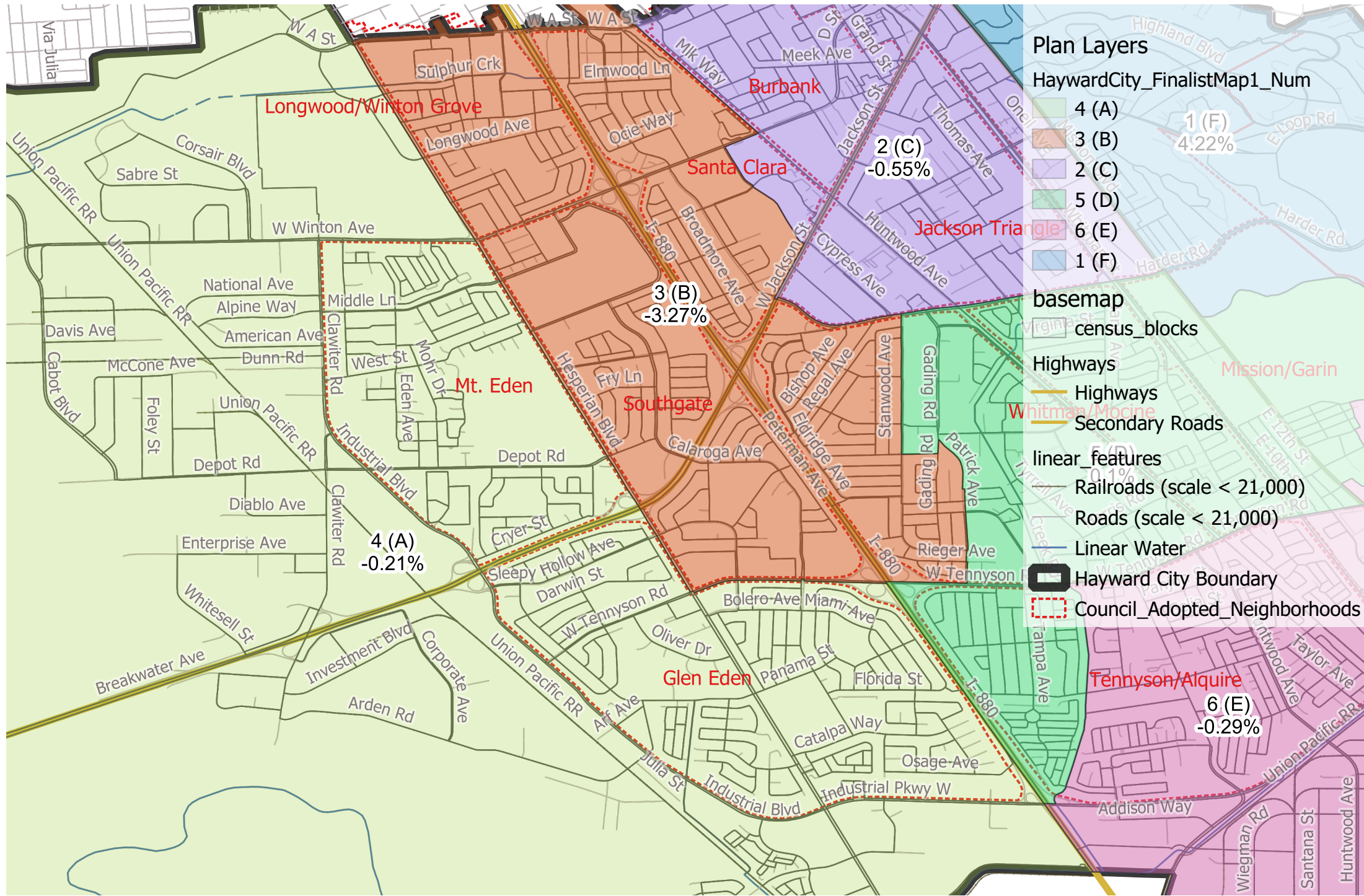
## District 4 (Formerly District A)





# Hayward City Council - Finalist Map 1 Modified

## District 4 (Formerly District A)



### Plan Layers

HaywardCity\_FinalistMap1\_Num

- 4 (A)
- 3 (B)
- 2 (C)
- 5 (D)
- 6 (E)
- 1 (F)

### basemap

- census\_blocks

### Highways

- Highways
- Secondary Roads

### linear\_features

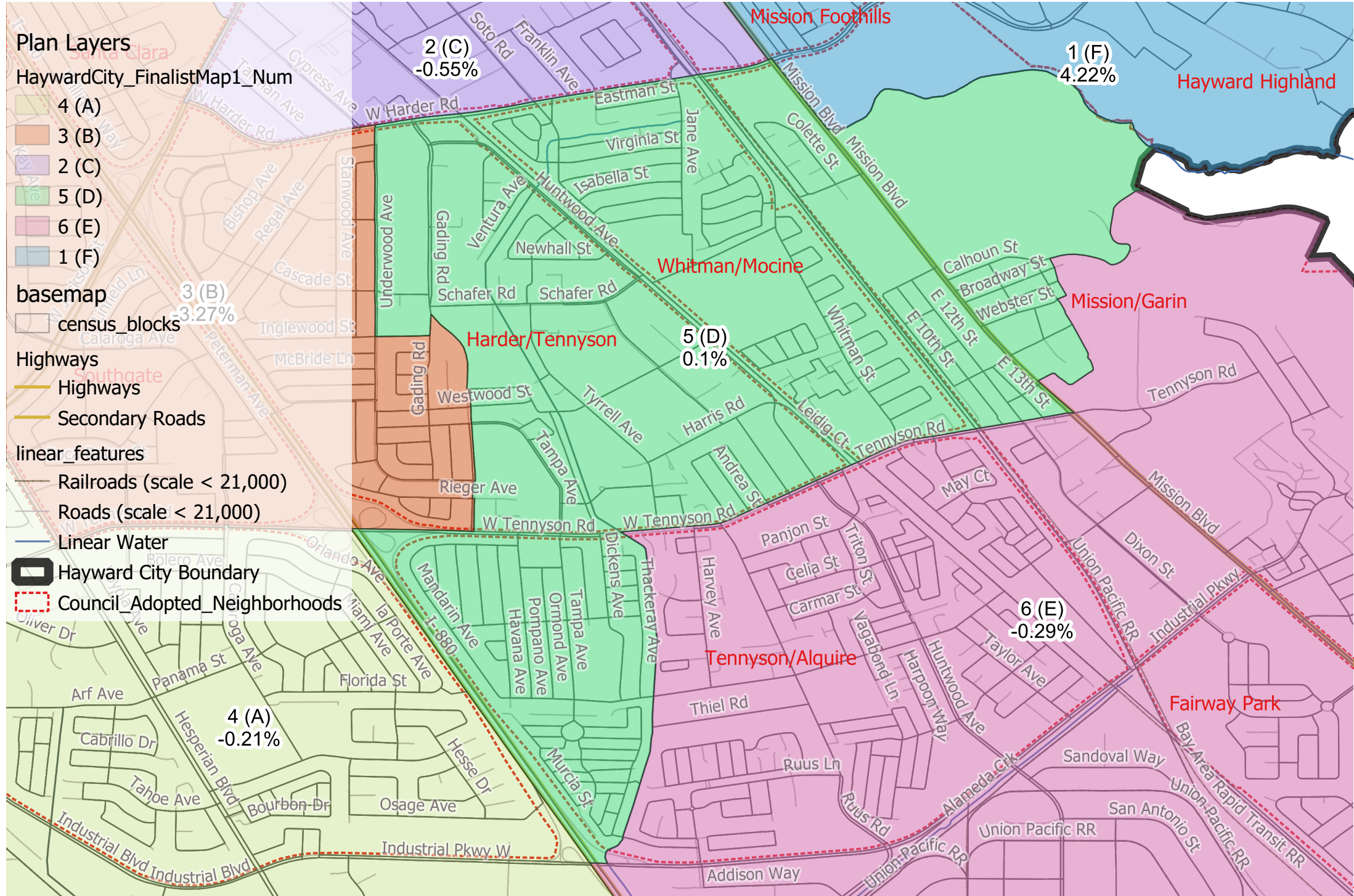
- Railroads (scale < 21,000)
- Roads (scale < 21,000)
- Linear Water

### Other Features

- Hayward City Boundary
- Council\_Adopted\_Neighborhoods

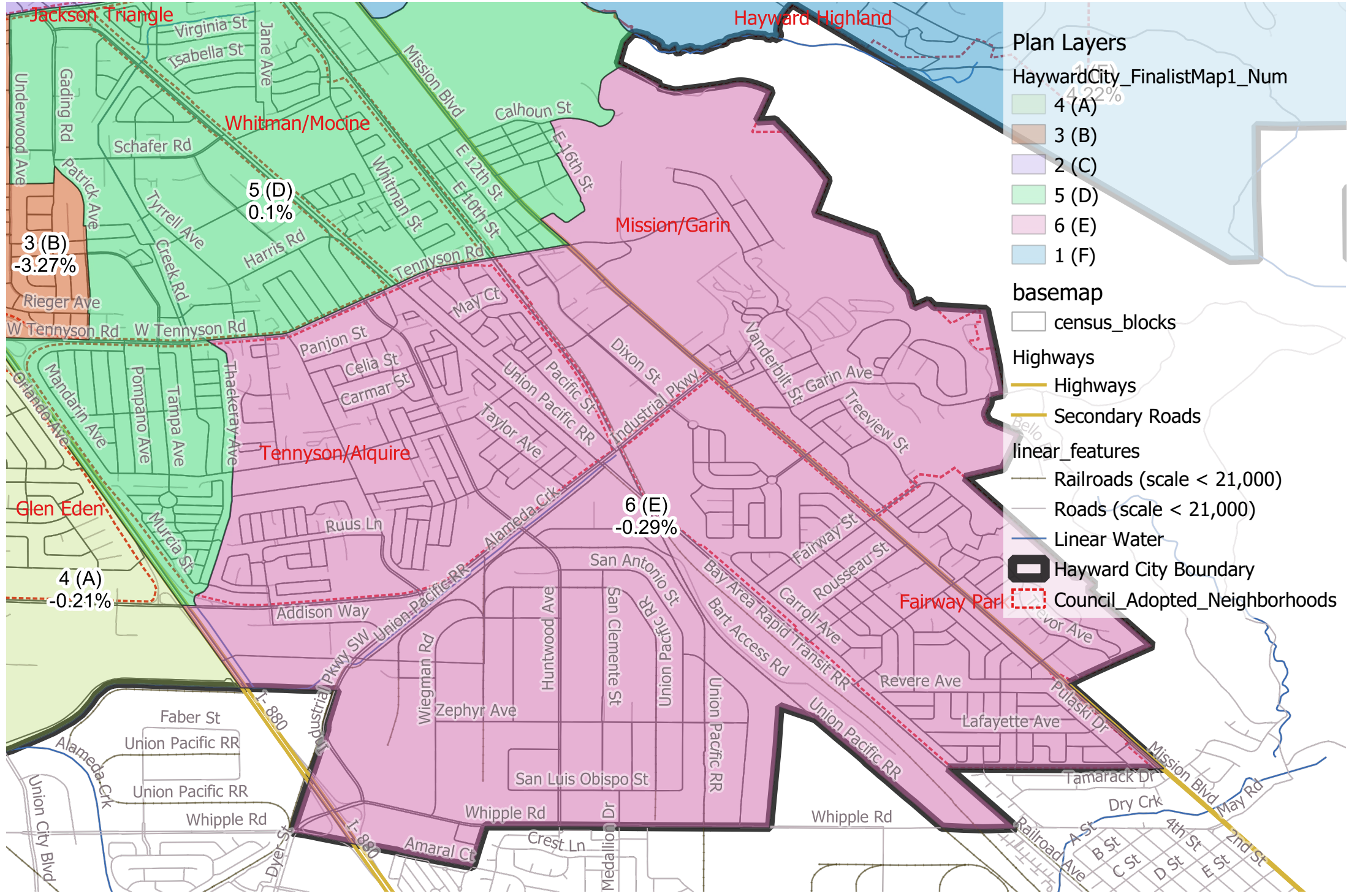
# Hayward City Council - Finalist Map 1 Modified

## District 5 (Formerly District D)



# Hayward City Council - Finalist Map 1 Modified

## District 6 (Formerly District E)



### Plan Layers

HaywardCity\_FinalistMap1\_Num

- 4 (A)
- 3 (B)
- 2 (C)
- 5 (D)
- 6 (E)
- 1 (F)

### basemap

- census\_blocks

### Highways

- Highways
- Secondary Roads

### linear\_features

- Railroads (scale < 21,000)
- Roads (scale < 21,000)
- Linear Water

### Other Features

- Hayward City Boundary
- Council\_Adopted\_Neighborhoods